



STEVE SISOLAK
Governor

STATE OF NEVADA
COMMISSION ON MINERAL RESOURCES
DIVISION OF MINERALS
400 W. King Street, Suite 106
Carson City, Nevada 89703
(775) 684-7040 • Fax (775) 684-7052
<http://minerals.nv.gov/>



MICHAEL VISHER
Administrator

Las Vegas Office: 375 E. Warm Springs Rd. #205, Las Vegas, NV 89119
Phone: (702) 486-4343; Fax: (702) 486-4345

Wednesday, August 10, 2022

1:00 P.M.

MINUTES

Commissioners	Staff	Public
Josh Nordquist	Mike Visher	Annie Huhta, Director, MSESE, via Zoom
Mary Korpi	Rob Ghiglieri	Sandra Brewer, BLM, via Zoom
Art Henderson	Sherrie Nuckolls	Robert Ernaut, R&R Partners, via Zoom
Bob Felder	Sean Derby	Jim Faulds, Director, NBMG
Nigel Bain	Valerie Kneefel	
Randy Griffin via Zoom	Anthony Walsh, DAG	

CALL TO ORDER

1:00 PM

ROLL CALL

All commissioners present except for Commissioner Hallinan. Quorum noted.

PLEDGE OF ALLEGIANCE

COMMENTS BY THE GENERAL PUBLIC

There were no comments.

AGENDA

A. Approval of the Agenda

Mike Visher requested a change to the agenda. That agenda Item IV.B. be tabled for a subsequent meeting.

Motion to approve the changed agenda made by: Bob Felder

Seconded by: Mary Korpi

Unanimously approved

II. MINUTES

A. Approval of the May 19, 2022, quarterly meeting minutes

Motion to approve the May 19, 2022, minutes made by: Nigel Bain

Seconded by: Mary Korpi

Unanimously approved

III. NEW BUSINESS

A. Review of Agency's Draft Budget for Fiscal years 2024/2025

Valerie Kneefel provided an overview of the budget building process, including budget timeline, rules, changes to the base year (FY22), enhancements, some screenshots from the Nevada Executive Budget System (NEBS), fund maps, and checklist, see attached presentation. Mike Visher then presented the fiscal year mining claim revenue and forecast for the end of the fiscal year 2022 and the actual vs. forecasts for revenue and expenditures through FY25, see attachments.

Randy Griffin: Do they ever ask you to add items to account for unforeseen expenses or inflation?

Mike Visher: No. You can't include anything for inflation or contingencies or overtime.

Bob Felder: Since our meeting in May and the softening market conditions, have you made any adjustments to our revenue expectations?

Mike Visher: We've projected no change to mining claim revenue for FY23, but -4% for each of FY 24 and FY25 based on a recent S&P Global forecast showing gold prices dropping 8% by 2025 and that mining claims typically follow trend of gold price. We're taking a conservative approach and one we think we can justify.

B. Overview of the Nevada Mining Center for Excellence and Request for Support

Annie Huhta, Director of the Mackay School of Earth Sciences and Engineering gave a presentation on the new Nevada Mining Center for Excellence, a collaboration between the University of Nevada, Reno and the Great Basin College, see attached presentation. At the conclusion of the PowerPoint, she summarized a letter to the Commission requesting financial support for the purchase of lab equipment. The lab equipment needs included: 1) unconfined compression testing machine - \$65,000; 2) crushing and grinding lab equipment - \$50,000; and 3) a 3D topographical and digital sand table - \$31,000.

Mike Visher: I'll add a little information I learned about Great Basin College. They have exposure in 21 different communities from Pahrump to Jackpot. Because they already had virtual teaching platforms, they actually saw increased enrollment during the pandemic. Their main campus in Elko is immersed in the mining community and this center is a mechanism for addressing the current educational needs in support of the industry. Annie, can you clarify your intent for where this equipment will be located and how it will be used?

Annie Huhta: Our phase I implementation will have this equipment go into the building in Elko where students will be using it hands-on. The high schools with dual credit programs, Battle Mountain, Elko, and Spring Creek will be part of this Phase I implementation. Potentially over 100 students from those 3 schools each year could use the lab.

Mary Korpi: I agree with Mike, the passion the teachers at Great Basin College have and cooperation with industry over the years has grown the programs significantly. The industry would have suffered if not for the feeder programs they have.

Nigel Bain: There's another group that may benefit from these programs and it's those without any tertiary schooling who are now foreman, supervisors, even managers that need to broaden their educational skillset. I'm fully supportive of this effort.

Mary Korpi: While there are current paths for trade positions, I see this as a great path for someone to then consider continuing on into maybe even engineering. The industry is starving for engineers. I like this feeder option.

Bob Felder: Annie, I have a couple of questions. The gentleman you've hired, who is that, what is his expertise, and what will he be teaching?

Annie Huhta: His name is Dr. Sam Spearing, he is a mining engineer, he has his doctorate, he's worked both state-side and internationally, most recently in Australia developing a program similar to what we're proposing here. Right now, he's working 50% at Mackay as an instructor and 50% on developing the curriculum for the Mining Center for

Excellence. We have one additional planned faculty hire to support earth science and areas outside of mining and metallurgical engineering.

Bob Felder: Do you have other funding proposals and what are your future funding needs?

Annie Huhta: Overall equipment needs we're looking at about \$450,000. We're currently in discussion with industry partners for an initial ask of \$500,000.

Josh Nordquist: Have we done any presentations with Great Basin College before, or partnered with them on AML or outreach?

Mike Visher: We partnered with them several years ago for one of our Teachers Workshops. On the AML side, not that I'm aware of.

Sean Derby: Have you reached out to any commercial partners, like Maptek or LeapFrog? They have offices in Elko and those licenses are expensive but having those tools available for younger students would be helpful.

Annie Huhta: I agree. There are a number of community stakeholders we've been connecting with to build out these partnerships. Additionally, Mackay already has working agreements with Maptek and others for support for students and faculty.

Anthony Walsh: Can I get a clarification on where the funding would be coming from for this request?

Mike Visher: It would come from the Reserve.

Anthony Walsh: Okay, I'm good with that.

Art Henderson: There are three items listed in the request and I think we should just fund them all, for the total of \$146,000.

Motion to approve spending of \$146,000 for purchase of the lab equipment detailed in the letter, made by: Nigel Bain

Seconded by: Art Henderson

Josh Nordquist: For clarity, the proposed spending would come from the Reserve, and in fiscal 2023, correct?

Mike Visher: Yes.

Mary Korpi: I would just add to that that we get a progress report at our meetings or twice a year on the Mining Center for Excellence from Annie.

Nigel Bain: Can we ask that of you Annie?

Annie Huhta: Of course, I'd be happy to. This will be one of many progress reports that we'll have.

Art Henderson: I just have one more question. For the mobile lab that you'll be developing, what percentage of use will it see? How many weeks a year?

Annie Huhta: Just for clarification, the lab equipment we're requesting the funding for will be installed in static lab in the building at the Elko campus. We will implement the mobile lab after the completion of Phase I. The mobile lab will be kept busy 48 or 49 weeks a year.

Art Henderson: The reason I ask, is that we do a lot of outreach and maybe when that lab isn't being used, we can use for it at some of educational outreach events, especially at the Teachers Workshops. Maybe we can do some things together.

Annie Huhta: Absolutely.

Josh Nordquist: For clarification, Phase II will be 2024, correct?

Annie Huhta: Yes.

Art Henderson: The lead time for this equipment, is that like 12 months?

Annie Huhta: I think it depends on the particular equipment and the components for that equipment which may extend the lead time. For example, for the 3D sandbox, the chip component will delay the delivery of it.

Josh Nordquist: Is there a plan for recognition?

Annie Huhta: We approach each entity with a discussion for how they'd like to be recognized. There are a number of opportunities for recognition. So, we can have that discussion.

Josh Nordquist: That means you, Mike. I think it's important that the younger generations know about the Commission. I also recognize that it's an outreach opportunity for our AML program.

Sean Derby: Yes, I like to have conversation with you about that, Annie.

Annie Huhta: Yes, I'd love to.

Josh Nordquist: Mike, do you see any issue with getting the funding to Annie soon so she can place the orders needed?

Mike Visher: No. There will be an interlocal contract needing approval by the BOE and a Work Program to be approved by the IFC, so depending on whether there is funding requirement prior to placing the order, it will take 2-3 months minimum before we can provide the funds.

Josh Nordquist: Annie, are you aware of this, the timing?

Annie Huhta: Yes, and I'm confident that we can complete the acquisition within the fiscal year.

Josh Nordquist: Any further discussion on the motion? Hearing none, we're ready for a vote.

Motion passed unanimously.

Annie Huhta: Thank you, truly. I believe this will be a unique and transformational program for rural Nevada.

C. Overview of the 2022 PDAC Annual Conference

A pre-recorded video presentation was shown. In it, Garrett Wake provided an overview of the 2022 Prospectors and Developers Association of Canada annual conference in Toronto, see attachment.

Art Henderson: Did I hear right; we were the only US agency at the event?

Rob Ghiglieri: Yes. There were a lot of US companies, but we were the only agency. We had a lot of interaction with folks, especially regarding critical minerals. It was a very good conference.

Art Henderson: Why just two people this year?

Rob Ghiglieri: In a normal year we would have five or six people additional people at the Nevada Booth, but this year's event was delayed and much smaller. Occurring in the middle of summer meant fewer industry and agency people could attend to help us out.

IV. OLD BUSINESS

A. Update on the Status of Commission-Approved Projects by NBMG

Jim Faulds, Director of the Nevada Bureau of Mines and Geology gave a PowerPoint presentation summarizing the recently completed and ongoing projects funded by the Commission, see attachment. There were no questions from the Commission. Jim Faulds then provided a verbal update on new LiDAR projects in the State and the GBSSRL building expansion funding request.

Rob Ghiglieri: When will the LiDAR data be available for the northern part of the State?

Jim Faulds: The acquisition was completed and the processing, which takes about a year, is ongoing. Some northern NV data will be released this fall, the rest next summer.

B. Updated NBMG Special Project Proposal

Tabled for future meeting.

C. Update on Rock and Mineral Exhibit at Reno Discovery Museum

A pre-recorded video presentation was shown. In it, Garrett Wake provided an update of the rock and minerals exhibit fabricated in Las Vegas and installed in the lobby of the Reno Discovery Museum in June, see attachment.

Mike Visher: The last page in your packet is a picture of the recognition plaque that will be attached to the exhibit. Mat Sinclair, the museum director, is very happy with the exhibit and asked me to express his thanks to the Commission. Having it located in the lobby makes it more accessible and free to the public.

Bob Felder: Is the museum going to have a special announcement or event to highlight the exhibit?

Mike Visher: It's anticipated that there will be something when Mat returns from his sabbatical.

D. Update on AML Hard Closure Fund Program

Sean provided an update on the Division's development of a hard closure funding program for public agencies. He walked through the anticipated workflow for the process, guidelines for submission and a sample closure request form. One question that staff wanted to ask the Commission was whether this program should be available for non-profits in addition to the public agencies, see attachment.

Sean Derby: There are a number of non-profits that may be interested in pursuing a funding request, but my initial inclination is not to allow it.

Mike Visher: We think the definition of public agency in State law is sufficient for us to start the program and is in line with what we presented to the Commission and what you approved. We felt we shouldn't just say no to non-profits without having consensus from the Commission.

Anthony Walsh: In keeping with the authority under NRS 513.108, I think it's safer to stick with funding to counties and the approach of public agencies. Having said that, there is no expressed prohibition on working with non-profit groups.

Mike Visher: Our intent here was to give you a progress report on the program's development and bring up the non-profit question, which is why it's listed on the agenda for possible action.

Josh Nordquist: Would the public agencies be coming to the Commission for approval.

Mike Visher: No, they would be coming to the Division for approval. Any proposals would be included in the monthly summary to the Commission.

Bob Felder: I agree with the discussion of leaving the non-profits aside.

Josh Nordquist: Okay, I think we're all in agreement that there's no action on this item.

COMMISSION BUSINESS

A. Review of staff monthly activity reports

Mike explained the reports for April, May and June are in more detail than the executive summary provided monthly to the Commission so if there are any questions, this is the time to ask about those. There were no questions asked by the Commission.

B. Set date for next Commission meeting

A special meeting, via Zoom, may be scheduled for early October for review of the digital marketing campaign video. The next quarterly meeting will be Wednesday, November 30, 2022, in Las Vegas, time and venue TBD.

COMMENTS BY THE GENERAL PUBLIC

There were no public comments.

ADJOURNMENT

3:49 p.m.

DRAFT



Budget Building Process

FY 24-25

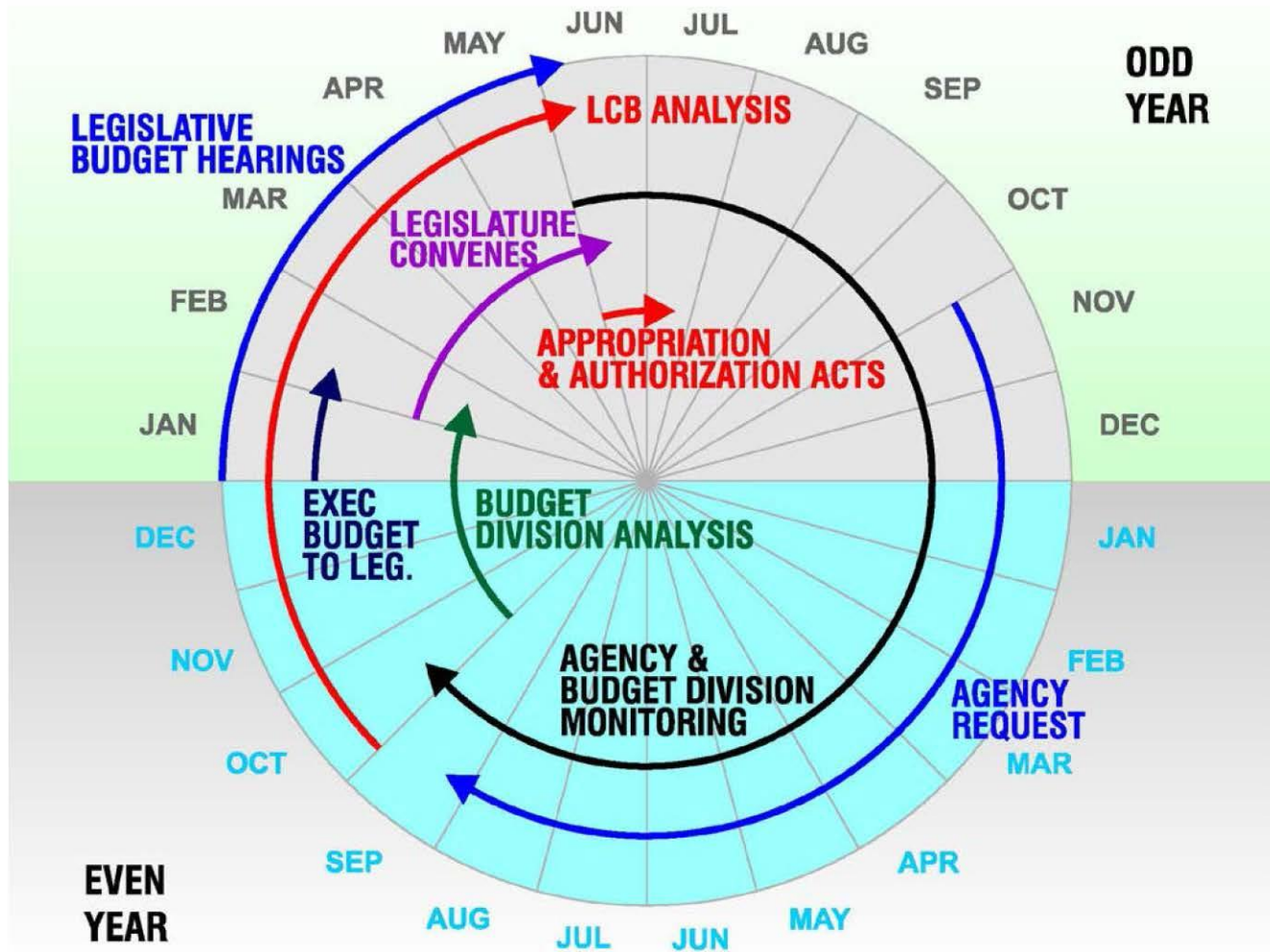
Valerie Kneefel – Program Officer II

Timelines for FY 24/25 Budget

- Nevada Executive Budget System open- April 2022
- Technology Investment Notifications (TIN) due-April 2022
- End of FY-22 Base Year- 6/30/22
- Base Year=This is the starting point for FY24-25
- Single Fiscal Year End Closings due- 8/31/22
- Agency Submitted Budget due-9/1/22 at 4:00 pm
- Governor's Finance office and LCB fiscal make adjustments and can only be done by these agencies. There will be several inquiries by either agency requiring responses and documentation.
- Legislatively Approved budget-Session starts 2/6/2023 ends 06/06/2023.



Biennial Budget Cycle



Major Budget Elements

Revenues

- Fees (Mining Claims, Fluid Minerals & Surface Disturbance)

- Grants (Assistance Agreements-BLM)

Expenditures

- Personnel

- General Operating

- Special Projects

- Equipment and other costs

- Specific Program operations (AML & Fluid Minerals)

Reserves

Reserve categories are not considered an expenditure category. A work program must be submitted and approved in order to transfer the any amount of the reserve to an expenditure category.

Budget Preparation for NEBS

- Travel and training logs
- Contract Information
- EITS Utilization Information
- Equipment Schedule
- Building Lease information
- Vehicle/Truck information-Fleet Service and Agency Owned
- Modifications changes to base
- Fund Maps

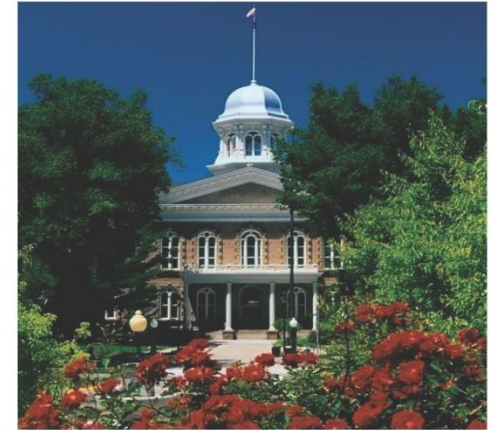
BIA (4219)																		
Division of Airports																		
2022 OUT-OF-STATE TRAVEL																		
ENHANCEMENT																		
Position Title	Date	Destination	FY-24	FY-25	Purpose	QBRT							Total					
						Per Diem	Meal MF	Misc	Ground	Pers Veh	Air	Gasoline		Registration				
Field Specialist US	Jan-24	Vancouver, Canada	X	X	Assistance to Director of Operations (AMT) - Portland International Airport	1,834.00		14.00										Did not attend due to COVID. This will be first year attending in person since 2020.
Administrative	Jan-21	Vancouver, Canada	X	X	Portland International Airport - AMT - Portland	1,239.00		10.00										Did not attend due to COVID. This will be first year attending in person since 2020.
Field Specialist CC	Feb-18	Chicago IL	X	X	National Association of Airport & Airfield Managers (NAARM)	850.00		70.00			998		400.00					The last in-person NAARM conference was 2019 and they are now back in person. Puller numbers from 2019.
Chief of Diagnostic Mgmt	Feb-14	Chicago IL	X	X	National Association of Airport & Airfield Managers (NAARM)	850.00		70.00			998							The last in-person NAARM conference was 2019 and they are now back in person. Puller numbers from 2019.
Equip Admin	Feb-14	Chicago IL	X	X	National Association of Airport & Airfield Managers (NAARM)	850.00		70.00			998							The last in-person NAARM conference was 2019 and they are now back in person. Puller numbers from 2019.
Field Specialist LT	Feb-14	Chicago IL	X	X	National Association of Airport & Airfield Managers (NAARM)	850.00		70.00			998		400.00					The last in-person NAARM conference was 2019 and they are now back in person. Puller numbers from 2019.
Administrative	Feb-21	Portland, OR	X	X	Airport Regulation & Staff's Association (ARSA)	799.96		10.00		143.94								Found to be 7 years in Spokane one year in Spokane, WA.
Field Specialist	Feb-24	Spokane, WA	X	X	Airport Regulation & Staff's Association (ARSA)	1,189.20		22.70		143.94								Found to be 2 years in Spokane one year in Spokane, WA.
Field Specialist/RS	Jan-21	San Diego, CA	X	X	International Airport Operations Conference (IAOP)	1,284.30		22.33		90.00								Was a virtual event in FY 2022. Now back in person.
Field Specialist	Jan-21	San Diego, CA	X	X	International Airport Operations Conference (IAOP)	1,284.30		22.33		90.00								Was a virtual event in FY 2022. Now back in person.
Equip Admin	Apr-2022	Phoenix, AZ	X	X	Airport & Airfield Managers (NAARM)	443.45												Was a virtual event in FY 2022. Now back in person.
FY-24 Total						8,024.56	0.00	20.33	805.06	363.93	7,303.73	0.00	800.00	0.00	0.00	0.00	17,660.55	
FY-25 Total						10,500.27	0.00	64.33	555.98	666.91	9,727.33	0.00	800.00	0.00	0.00	0.00	22,375.32	
Total						18,524.83	0.00	84.66	1,361.04	1,030.84	17,031.06	0.00	1,600.00	0.00	0.00	0.00	39,995.87	

Changes to Base Year (FY-22)

- Personnel
 - Adding a new position (GIS Analyst)
 - Full Time staffing at 11 changing to 12
- Special Projects
 - NBMG 2-year agreement for reports and archiving \$97K/yr
 - AME-Roundup in Canada-\$3,600 travel for 2 attendees.
- AML
 - Trucks. The State replacement schedule allows for replacement of the Division's trucks every 10 years. We have been unable to replace them due to shortage of availability. In FY24-25 we will need to replace 3 vehicles.

General Budget Rules

- Every even year's actuals is the base for the next Budget
- Budgeting for two fiscal years
- Any change to the budget must be:
 - Documented (M-150, E-710 or other)
 - Justified
 - Explanation with reasoning
 - CMR or other approval
 - Quotes
 - Relations to NACs or State Administrative Manual
 - Funded
 - Document funding source
- Cannot budget for cost allocations. (Personnel, Attorney General Office, Mail, EITS)
- Approved at 3 levels
 - Agency
 - Governor's Finance Office
 - Legislature
- Actual Budget Manual 167 pages
- Expenditures must be attached to an Activity that meets the Governors strategic priorities.



Budget Building Manual 2023 - 2025 Biennium

Susan Brown, Director
Governor's Finance Office
209 E. Musser St. Room 200
Carson City, NV 89701
www.budget.nv.gov

Nevada Executive Budget System (NEBS)

(Online demonstration will be provided during the meeting)

Budget Account Line Item Summary: Budget Account by DU

Budget Account Version: 2023-2025 Biennium (FY24-25) 4219 DIVISION OF MINERALS A00 AGENCY REQUEST AS SUBMITTED

Summary Page

Summary Line Items Schedules Positions Mapping Acct. Maint.

View: Bud Acct by DU

Catg	GL	Description	Actual	Work Program	B000	M100	M150	E127	E226	E710	E711	E712	Yr 1 Total	B000	M100	M150	E127	E226	E710	
00	2511	BALANCE FORWARD FROM PREVIOUS YEAR	2,624,665	1,228,673	1,455,212	0	0	0	0	0	0	0	1,455,212	1,455,212	0	0	0	0	0	0
00	2512	BALANCE FORWARD TO NEW YEAR	0	0	0	0	0	0	0	0	0	0	0	0	0	0	0	0	0	0
00	3578	FED BLM CORPORATIVE AGREEMENT	200,000	200,000	200,000	0	0	0	0	0	0	0	200,000	200,000	0	0	0	0	0	0
00	3580	USFS ASSISTANCE AGREEMENT	80,349	10,772	100,000	0	0	0	0	0	0	0	100,000	100,000	0	0	0	0	0	0
00	3584	FEDERAL GRANT-D	77,787	94,092	77,787	0	0	0	0	0	0	0	77,787	0	0	0	0	0	0	0
00	3654	OIL AND GAS PERMITS AND FEES	22,668	37,907	37,907	0	0	0	0	0	0	0	37,907	37,907	0	0	0	0	0	0
00	3717	APPLICATION FEES	4,400	3,300	3,300	0	0	0	0	0	0	0	3,300	3,300	0	0	0	0	0	0
00	3718	MINING REGULATION FEES	1,540,710	1,522,188	1,522,188	0	0	0	0	0	0	0	1,522,188	1,522,188	0	0	0	0	0	0
00	3727	DANGEROUS MINE FEES	1,027,140	1,014,792	1,014,792	0	0	0	0	0	0	0	1,014,792	1,014,792	0	0	0	0	0	0
00	3736	GEO THERMAL FEES	156,550	160,800	160,800	0	0	0	0	0	0	0	160,800	160,800	0	0	0	0	0	0
00	3740	DISSOLVED MINERAL RES EXPL	8,000	2,000	2,000	0	0	0	0	0	0	0	2,000	2,000	0	0	0	0	0	0
00	3770	AML SECURING FEE	90,940	81,740	81,740	0	0	0	0	0	0	0	81,740	81,740	0	0	0	0	0	0
00	3805	NAAMP CONFERENCE	82,602	0	0	0	0	0	0	0	0	0	0	0	0	0	0	0	0	0
00	4011	PRINTING SALES	0	27	27	0	0	0	0	0	0	0	27	27	0	0	0	0	0	0
00	4027	PUBLICATION SALES	2,937	1,210	1,210	0	0	0	0	0	0	0	1,210	1,210	0	0	0	0	0	0
00	4218	REBATE	294	0	294	0	0	0	0	0	0	0	294	294	0	0	0	0	0	0
00	4311	ROYALTY INCOME	253	1,304	253	0	0	0	0	0	0	0	253	253	0	0	0	0	0	0
00	4326	TREASURERS INTEREST DISTRIB	16,858	40,990	40,990	0	0	0	0	0	0	0	40,990	40,990	0	0	0	0	0	0
00	4620	TRANSFER FROM RECLAMATION BOND POOL ...	0	80,793	80,793	0	0	0	0	0	0	0	80,793	80,793	0	0	0	0	0	0
00	4669	TRANS FROM OTHER B/A SAME FUND	0	0	0	0	0	0	0	0	0	0	0	0	0	0	0	0	0	0
		Sub Total Category 00: REVENUE	5,936,153	4,480,588	4,779,293	0	0	0	0	0	0	0	4,779,293	4,701,506	0	0	0	0	0	0
01	5100	SALARIES	823,869	853,585	854,412	0	0	66,173	0	0	0	0	920,585	855,671	0	0	88,230	0	0	0
01	5170	SEASONAL	0	130,548	0	0	0	0	0	0	0	0	0	0	0	0	0	0	0	0
01	5200	WORKERS COMPENSATION	11,148	8,075	8,080	0	0	1,179	0	0	0	0	9,259	8,041	0	0	731	0	0	0
01	5300	RETIREMENT	175,136	170,401	178,213	0	0	10,257	0	0	0	0	188,470	178,589	0	0	13,676	0	0	0
01	5400	PERSONNEL ASSESSMENT	3,015	2,865	782	0	0	261	0	0	0	0	1,043	782	0	0	261	0	0	0
01	5420	COLLECTIVE BARGAINING ASSESSMENT	18	60	18	0	0	0	0	0	0	0	18	18	0	0	0	0	0	0
01	5430	LABOR RELATIONS ASSESSMENT	536	469	536	0	0	0	0	0	0	0	536	536	0	0	0	0	0	0
		Total Revenue	5,936,153	4,480,588	4,779,293	0	0	0	0	0	0	0	4,779,293	4,701,506	0	0	0	0	0	0
		Total Expense	4,111,442	3,752,894	4,145,721	-18,619	-4,622	87,736	30,589	38,983	42,157	3,960	4,325,905	4,147,363	-18,619	-64,327	115,857	35,304	17,8	0

Line Items

NEBS - Nevada Executive Budget System
Nevada Executive Budget System

Home NEBS Work Programs SFYE Reports Data Mart Messages

Budget Account Line Items

Budget Account Version: 2023-2025 Biennium (FY24-25) 4219 DIVISION OF MINERALS A00 AGENCY REQUEST AS SUBMITTED

Revenue/Expenditures Out of Balance

All DUs	Y1	453,388	Y2	417,643
This DU (All)	Y1	453,388	Y2	417,643
Other DUs (None)	Y1	0	Y2	0

Reserves Out of Balance

All DUs	WP/Y1	454,275	Y1/Y2	226,539
This DU (All)	WP/Y1	454,275	Y1/Y2	226,539
Other DUs (None)	WP/Y1	0	Y1/Y2	0

Actual/WP Reserves Out of Balance

This DU (All)	1,228,673
---------------	-----------

Summary Line Items Schedules Positions Mapping Acct. Maint.

Action	DU	Catg	GL	Description	Actual	Work Pgm	Year 1	Change	Year 2	Change	Schedule
	8000	00	2511	BALANCE FORWARD FROM PREVIOUS YEAR	2,624,665	1,228,673	1,455,212	0	1,455,212	0	- None -
	8000	00	2512	BALANCE FORWARD TO NEW YEAR	0	0	0	0	0	0	- None -
	8000	00	3578	FED BLM CORPORATIVE AGREEMENT	200,000	200,000	200,000	0	200,000	0	- None -
	8000	00	3580	USFS ASSISTANCE AGREEMENT	80,349	10,772	100,000	0	100,000	0	- None -
	8000	00	3584	FEDERAL GRANT-D	77,787	94,092	77,787	0	0	0	- None -
	8000	00	3654	OIL AND GAS PERMITS AND FEES	22,668	37,907	37,907	0	37,907	0	- None -
	8000	00	3717	APPLICATION FEES	4,400	3,300	3,300	0	3,300	0	- None -
	8000	00	3718	MINING REGULATION FEES	1,540,710	1,522,188	1,522,188	0	1,522,188	0	- None -
	8000	00	3727	DANGEROUS MINE FEES	1,027,140	1,014,792	1,014,792	0	1,014,792	0	- None -
	8000	00	3736	GEO THERMAL FEES	156,550	160,800	160,800	0	160,800	0	- None -
	8000	00	3740	DISSOLVED MINERAL RES EXPL	8,000	2,000	2,000	0	2,000	0	- None -
	8000	00	3770	AML SECURING FEE	90,940	81,740	81,740	0	81,740	0	- None -
	8000	00	3805	NAAMLP CONFERENCE	82,602	0	0	0	0	0	- None -
	8000	00	4011	PRINTING SALES	0	27	27	0	27	0	- None -
	8000	00	4027	PUBLICATION SALES	2,937	1,210	1,210	0	1,210	0	- None -
	8000	00	4218	REBATE	294	0	294	0	294	0	- None -
	8000	00	4311	ROYALTY INCOME	253	1,304	253	0	253	0	- None -
	8000	00	4326	TREASURER'S INTEREST DISTRIB	16,858	40,990	40,990	0	40,990	0	- None -
	8000	00	4620	TRANSFER FROM RECLAMATION BOND POOL BA 4220	0	80,793	80,793	0	80,793	0	- None -
	8000	00	4669	TRANS FROM OTHER B/A SAME FUND	0	0	0	0	0	0	- None -
	8000	01	5100	SALARIES	823,869	853,585	854,412	0	855,671	0	PAYROLL
	8000	01	5170	SEASONAL	0	130,548	0	0	0	0	- None -
	8000	01	5200	WORKERS COMPENSATION	11,148	8,075	8,080	0	8,041	0	PAYROLL
	8000	01	5300	RETIREMENT	175,136	170,401	178,213	0	178,589	0	PAYROLL
	8000	01	5400	PERSONNEL ASSESSMENT	3,015	2,865	782	0	782	0	PAYROLL
	8000	01	5420	COLLECTIVE BARGAINING ASSESSMENT	18	60	18	0	18	0	- None -
	8000	01	5430	LABOR RELATIONS ASSESSMENT	536	469	536	0	536	0	ADMINISTRATION - LABOR RELATIONS ALLOCATION
				Total Revenue	5,936,153	4,480,588	4,779,293		4,701,506		
				Total Expenditures	4,111,442	3,752,894	4,325,905		4,283,863		
				Difference	1,824,711	727,694	453,388		417,643		

Save Save & Return Cancel

Maintenance and Enhancements to the Base (Adjustments)

Budget Account Version: 2023-2025 BRF001 (12/23) 7419 DIVISION OF MINERALS

Revenue/Expenditures Out of Balance ▲

All DUs	Y1	453,388	Y2	417,643
This DU (M150)	Y1	4,622	Y2	64,327
Other DUs (E000, E127, more...)	Y1	448,766	Y2	353,316

Reserves Out of Balance ●

All DUs	WF/Y1	454,275	Y1/Y2	226,539
This DU (M150)	WF/Y1	0	Y1/Y2	0
Other DUs (E000)	WF/Y1	454,275	Y1/Y2	226,539

Summary | Line Items | Schedules | Positions | Mapping | Acct. Maint.

Add Line Item		Decision Unit:	M150 ADJUSTMENTS TO BASE		Synchronize Actuals to DAWN		Edit Actual/WP	Reserves	Highlight Changes		Schedule
Action	DU	Catg	GL	Description	Actual	Work Pgm	Year 1	Change	Year 2	Change	
	M150	02	7302	REGISTRATION FEES	0	0	400	0	400	0	VENDOR SERVICES
	M150	03	6211	FS MONTHLY VEHICLE RENTAL IN-STATE	0	0	13,098	0	13,098	0	FLEET SERVICES VEHICLES
	M150	04	7051	AGENCY OWNED - PROP. & CONT. INSURANCE	0	0	-49	0	-49	0	AGENCY-OWNED PROPERTY AND CONTENTS
	M150	04	7052	VEHICLE COMP & COLLISION INS	0	0	-721	0	-721	0	AGENCY OWNED VEHICLES
	M150	04	7059	AG VEHICLE LIABILITY INSURANCE	0	0	-956	0	-956	0	AGENCY OWNED VEHICLES
	M150	04	705A	NON B&G - PROP. & CONT. INSURANCE	0	0	53	0	53	0	BUILDING RENT NON-BUILDINGS AND GROUNDS
	M150	04	7060	CONTRACTS	0	0	28	0	28	0	VENDOR SERVICES
	M150	04	7110	NON-STATE OWNED OFFICE RENT	0	0	97	0	97	0	BUILDING RENT NON-BUILDINGS AND GROUNDS
	M150	04	7111	NON-STATE OWNED STORAGE RENT	0	0	1,073	0	3,319	0	BUILDING RENT NON-BUILDINGS AND GROUNDS
	M150	04	7255	B & G LEASE ASSESSMENT	0	0	38	0	38	0	BUILDING RENT NON-BUILDINGS AND GROUNDS
	M150	04	7286	MAIL STOP-STATE MAILROOM	0	0	-2,120	0	-2,120	0	MAIL STOP - MAIL SERVICES
	M150	04	7300	DUES AND REGISTRATIONS	0	0	100	0	100	0	VENDOR SERVICES
	M150	04	7301	MEMBERSHIP DUES	0	0	-7,500	0	-7,500	0	VENDOR SERVICES
	M150	04	7302	REGISTRATION FEES	0	0	-400	0	-400	0	VENDOR SERVICES
	M150	04	7370	PUBLICATIONS AND PERIODICALS	0	0	3,107	0	3,107	0	VENDOR SERVICES
	M150	04	7637	NOTARY FEE APPLY OR RENEW	0	0	150	0	150	0	- None -
	M150	04	7980	OPERATING LEASE PAYMENTS	0	0	759	0	759	0	VENDOR SERVICES
	M150	05	8241	NEW FURNISHINGS <\$5,000 - A	0	0	-1,210	0	-1,210	0	EQUIPMENT
	M150	09	7060	CONTRACTS	0	0	49,163	0	-14,807	0	VENDOR SERVICES
	M150	14	7051	AGENCY OWNED - PROP. & CONT. INSURANCE	0	0	-18	0	-18	0	AGENCY-OWNED PROPERTY AND CONTENTS
	M150	14	705A	NON B&G - PROP. & CONT. INSURANCE	0	0	21	0	21	0	BUILDING RENT NON-BUILDINGS AND GROUNDS
	M150	14	7062	CONTRACTS - B	0	0	-37	0	-37	0	VENDOR SERVICES
	M150	14	7110	NON-STATE OWNED OFFICE RENT	0	0	-146	0	781	0	BUILDING RENT NON-BUILDINGS AND GROUNDS
	M150	14	7111	NON-STATE OWNED STORAGE RENT	0	0	-11	0	-11	0	BUILDING RENT NON-BUILDINGS AND GROUNDS
	M150	14	7255	B & G LEASE ASSESSMENT	0	0	19	0	19	0	BUILDING RENT NON-BUILDINGS AND GROUNDS
	M150	14	7980	OPERATING LEASE PAYMENTS	0	0	-2	0	-2	0	VENDOR SERVICES
	M150	17	7052	VEHICLE COMP & COLLISION INS	0	0	105	0	105	0	AGENCY OWNED VEHICLES
Total Revenue					0	0	0	0	0	0	

This is where all changes to the base budget take place. These are Categories and GL's that already are established, and adjustments either plus or negative are made.

Budget Checklist

BUDGET PREPARATION CHECKLIST

Department:		Commission on Mineral Resources				
Division #:	500	Division:	Minerals			
Budget Account #:	4219	Budget Account:				
Item #	Item Description	Submission Methodology	Location Entered in NEBS or Location of Attachment	Attached In NEBS	Reviewed/Complete	Item Status
1	Budget Submission Certification Letter for each agency signed by the director, or board or commission chairman (with Title) with two-times budget limit calculation.	* REQUIRED - Email, fax or deliver to: Budget Division, copy your Budget and LCB fiscal Analysts			9/1/2020	Complete
2	Organizational Charts for each agency by programs and by FTE highlighting any program or FTE additions, deletions or changes	REQUIRED - Email, fax or deliver to: Budget Division and LCB Fiscal Analysis	NEBS Tab, Budget Account Screen, Additional Text Folder	7/6/2020	7/6/2020	Complete
3	Budget Preparation Checklist	Attachment in NEBS	NEBS Tab, Budget Account Screen, Additional Text Folder	9/1/2020	9/1/2020	Complete
4	Fund Mapping (In NEBS and provide Excel version)	Entered in NEBS & Attachment in NEBS	Mapping Tab & Excel Version attached to NEBS Tab, Budget	8/27/2020	8/27/2020	Complete
5	Update Program Description (prints in Executive Budget Book)	Entered in NEBS	NEBS Tab, Budget Account Screen, Additional Text Folder		8/20/2020	Complete
6	Performance Measures	Entered in NEBS	Activity Budget Tab, Activities Tab		8/20/2020	Complete
7	Agency Methodology used to track Performance Measures & Supporting Documentation	Entered in NEBS	Activity Budget Tab, Activities Tab		8/20/2020	Complete
8	Maintenance/Enhancement Decision Unit Narrative including Word/Excel supporting documentation and calculations.	Entered in NEBS	Account Maintenance Tab, applicable Decision Unit		8/26/2020	Complete
9	Prioritized Decision Units at Department and Division Level	Entered in NEBS	Account Maintenance Tab		7/15/2020	Complete
10	Agency Efficiency Option Decision Unit	Entered in NEBS	Account Maintenance Tab		N/A	Complete
11	Transfer Decision Units - Reconcile	Entered in NEBS	E900 Series Decision Units		N/A	Complete
12	M150 Notes (Required for every line item)	Entered in NEBS	Line Item Tab, Filter M150 - Adjustments to Base		8/15/2020	Complete

Budget_Preparation_Checklist - FINAL VERSION (1).xlsx

	A	B	C	D	E	F	G	H
21	15	Demographics/Caseload - narrative, methodology used and actual and projected caseloads by program		Attachment in NEBS	Account Maintenance Tab, applicable Maintenance Decision Unit (M800 Series) Cost Allocation	N/A	N/A	Complete
22	16	Agency Cost Allocation Plans		Attachment in NEBS	Maintenance Decision Unit (M800 Series)	N/A	N/A	Complete
23	17	Travel Logs & justification for Out-of-State, In-State & Training (all categories)		Attachment in NEBS	Account Maintenance Tab, BASE	8/1/2020	8/1/2020	Complete
24	18	Justification for Positions Vacant at least 12 months as of September 1st - required per NRS 353.210(b)		Attachment in NEBS	Account Maintenance Tab, BASE	N/A	N/A	Complete
25	19	Business plan (if required)		Attachment in NEBS	Account Maintenance Tab, applicable Decision Unit	N/A	N/A	Complete
26	20	Excel Fund Map		Attachment in NEBS	Account Maintenance Tab, applicable Decision Unit	8/27/2020	8/27/2020	Complete
27	21	Position Fund Map		Attachment in NEBS	Account Maintenance Tab, applicable Decision Unit	N/A	N/A	Complete
28	22	Technology Investment Notification (TIN)		Attachment in NEBS	Account Maintenance Tab, applicable Decision Unit	4/5/2020	4/5/2020	Complete
29	23	Signed MPD-19s for new Positions and Reclassifications (add decision unit number in right upper hand corner of State Public Works Division New/Additional Space Request (Leased Space form and Justification)		Attachment in NEBS	Account Maintenance Tab, applicable Decision Unit	N/A	N/A	Complete
30	24			Attachment in NEBS	Account Maintenance Tab, applicable Enhancement Decision Unit	N/A	N/A	Complete
31	25	Contract Summaries		Attachment in NEBS	Schedules Tab, Vendor Schedule, applicable line item **	8/15/2020	8/15/2020	Complete
32	26	Vendor Quotes		Attachment in NEBS	Schedules Tab, Equipment Schedule, Applicable Equipment line item	8/15/2020	8/15/2020	Complete
33	27	Fleet Services Monthly Mileage Log		Attachment in NEBS	Schedules Tab, Fleet Services Vehicles Schedule	8/15/2020	8/15/2020	Complete
34	28	Statewide Lease Information Form for each BOE-approved existing lease agreement for non-state owned buildings		Attachment in NEBS	Schedules Tab, Bldg Rent Non-B&G Schedule, applicable line item **	8/15/2020	8/15/2020	Complete
35	29	Equipment Replacement Schedule Inventory Log		Attachment in NEBS	Schedules Tab, Equipment Schedule	8/15/2020	8/15/2020	Complete
36	30	Review Agency-Owned Property and Contents Insurance Schedule		Statewide Schedule			8/24/2020	Complete
37	31	Review B&G-Owned Rent Schedule		Statewide Schedule			8/24/2020	Complete
38	32	Complete Position Reconciliation (Phase I and II) and Process payroll and all schedules a final time		NEBS Tab, Positions & Schedules Tabs			7/15/2020	Complete
39	33	Out-of-Balance Reports - run all exception reports and correct any exceptions		Reports Tab, Exception Reports			8/27/2020	Complete
		Run the following reports and verify		Reports Tab, Budget Account Reports				

Certification Letter



STEVE SISOLAK
Governor

STATE OF NEVADA
COMMISSION ON MINERAL RESOURCES
DIVISION OF MINERALS
400 W. King Street, Suite 106
Carson City, Nevada 89703
(775) 684-7040 • Fax (775) 684-7052
<http://minerals.nv.gov/>

Las Vegas Office: 375 E. Warm Springs Rd. #205, Las Vegas, NV 89119
Phone: (702) 486-4343; Fax: (702) 486-4345



MICHAEL VISHER
Administrator

2021-2023 Biennial Budget Certification Letter

The Commission on Mineral Resources, Division of Minerals submitted our agency requested budget in accordance with the 2021-2023 Budget Instructions.

Budget Accounts included:
BA 4219

Agency Contact:
Michael Visher, Administrator – Division of Minerals, mvisher@minerals.nv.gov

By signing below, I certify that:

1. Narrative Information for all budget accounts under the department/agency listed above, including the program description, budget highlights, decision unit synopsis, and line item justification has been updated and/or added as necessary to properly reflect the budget being requested.
 Yes No N/A
2. All fiscal information, including Base, Maintenance and Enhancement Decision Units has been added, updated and reconciled for all budget accounts under the department/agency listed above, to properly reflect the agency budget being requested.
 Yes No N/A
3. We have complied with the Budget Request Limit per All Agency Memo.
 Yes No N/A
4. Enhancement decisions units have been prioritized and include maintenance items to continue operations.
 Yes No N/A
5. Supporting documentation, such as caseload statistics, is attached where appropriate and calculations have been provided where necessary to show how figures were derived.
 Yes No N/A
6. Inter-departmental transfers (E-9xx) and intradepartmental transfers (M-8xx/E-8xx), including any cost allocations, have been reconciled to ensure the sending and receiving accounts balance to one another.
 Yes No N/A

7. Fund Mapping has been completed at the:
 - o Line Item, and
 Yes No N/A
 - o Activity.
 Yes No N/A
8. Activity Budget has been updated to include:
 - o Updated metrics for performance measures.
 Yes No N/A
 - o Updated population information.
 Yes No N/A
9. Organizational Charts are attached or have been submitted separately:
 - o By Position, and
 Yes No N/A
 - o By Program.
 Yes No N/A
10. Requests for supplemental appropriations have been completed and include adequate justification, supporting documentation and calculations detailing how the amount was derived.
 Yes No N/A
11. Budgetary Bill Draft Requests necessary to implement the requested budget have been submitted in NEBS and are properly referenced in the notes of the related decision unit(s).
 Yes No N/A
12. Decision units submitted to address previously passed legislation, letters of intent from the 2019 Legislative Session, and/or to implement recommendations from LCB Audit or GFO's Division of Internal Audits have been included along with sufficient narrative explaining the issue being addressed.
 Yes No N/A


Authorized Signature
(Commission Chairman)

September 1, 2020
Date

Budget Process outside of our Agency's Control

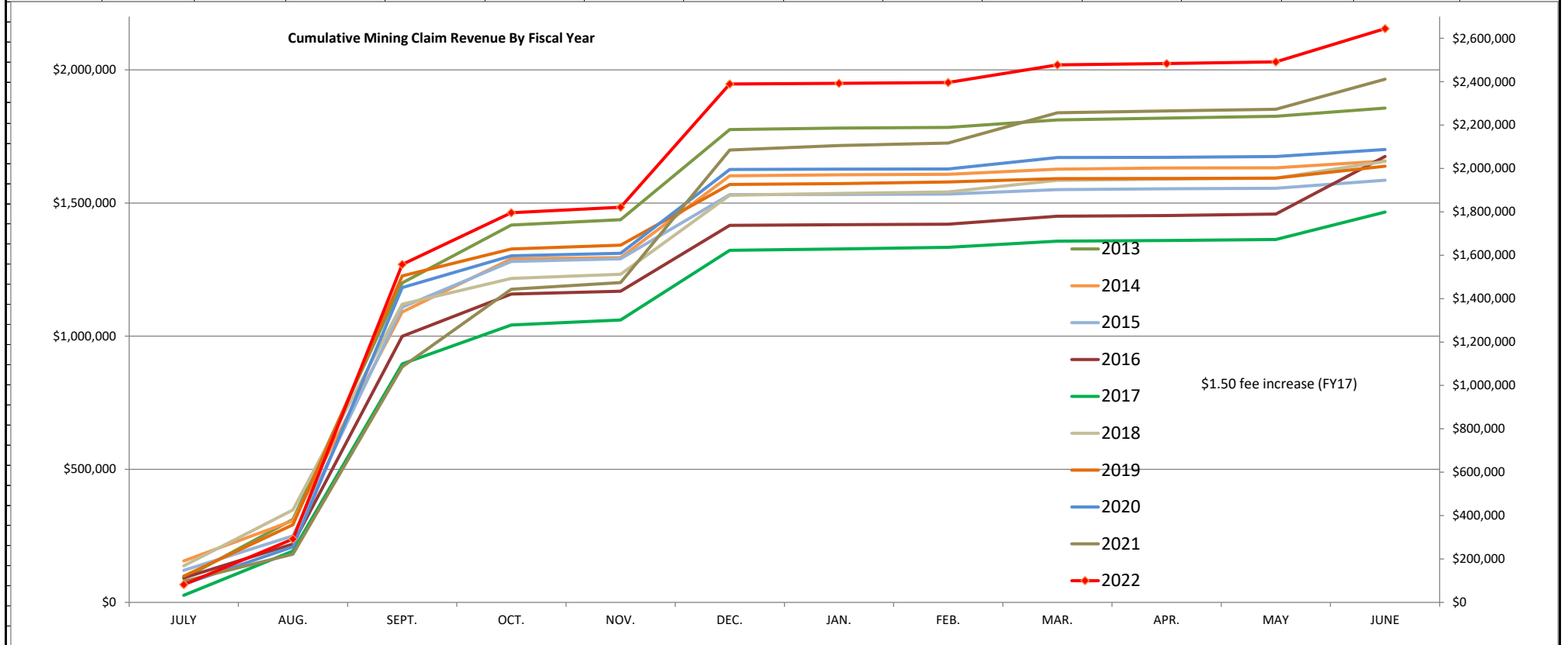
These items may happen during the Governor's recommended budget or the Legislative Session:

- Furlough
- Merit Pay increase
- Cost of living adjustment's
- Allocations for Public Employee Benefit Program or Public Employee Retirement System



Fiscal Year Cumulative Mining Claim Revenue By Month

Fiscal Year	JULY	AUG.	SEPT.	OCT.	NOV.	DEC.	JAN.	FEB.	MAR.	APR.	MAY	JUNE	\$ YOY	Total Claim Filings
2022	\$81,700	\$292,160	\$1,557,970	\$1,796,170	\$1,821,730	\$2,389,380	\$2,392,810	\$2,396,650	\$2,477,620	\$2,483,930	\$2,491,520	\$2,644,530	9.7%	264,453
2021	\$97,190	\$222,510	\$1,085,820	\$1,443,520	\$1,474,160	\$2,085,310	\$2,105,650	\$2,116,960	\$2,257,030	\$2,265,460	\$2,273,190	\$2,411,530	15.5%	241,153
2020	\$83,720	\$256,070	\$1,450,980	\$1,597,760	\$1,609,370	\$1,995,430	\$1,997,180	\$1,997,950	\$2,050,880	\$2,051,660	\$2,054,840	\$2,087,470	3.7%	208,747
2019	\$121,080	\$357,900	\$1,504,660	\$1,628,710	\$1,646,750	\$1,926,020	\$1,930,460	\$1,937,910	\$1,953,500	\$1,954,140	\$1,955,820	\$2,010,510	-1.1%	201,051
2018	\$168,630	\$425,870	\$1,374,840	\$1,493,090	\$1,512,540	\$1,876,580	\$1,885,390	\$1,892,210	\$1,945,520	\$1,951,080	\$1,955,670	\$2,032,980	13.0%	203,298
2017	\$32,650	\$236,939	\$1,099,584	\$1,278,775	\$1,301,335	\$1,622,635	\$1,629,225	\$1,636,885	\$1,664,685	\$1,668,165	\$1,672,765	\$1,799,065	7.4%	179,935
2016	\$92,072	\$219,020	\$999,082	\$1,158,219	\$1,168,827	\$1,415,769	\$1,418,574	\$1,420,520	\$1,450,134	\$1,453,118	\$1,458,388	\$1,674,866	5.6%	197,043
2015	\$120,352	\$250,079	\$1,108,417	\$1,280,687	\$1,290,241	\$1,531,683	\$1,532,431	\$1,533,349	\$1,550,247	\$1,553,571	\$1,555,211	\$1,585,539	-4.4%	186,534
2014	\$155,703	\$306,646	\$1,090,754	\$1,290,496	\$1,294,661	\$1,602,233	\$1,606,177	\$1,607,656	\$1,627,283	\$1,631,235	\$1,632,417	\$1,657,789	-10.7%	195,034
2013	\$90,253	\$311,806	\$1,199,622	\$1,417,171	\$1,437,104	\$1,775,803	\$1,781,575	\$1,783,870	\$1,812,217	\$1,818,745	\$1,825,571	\$1,856,460	-2.8%	218,407
FY22 data as of 8/2/22														
12 Counties pay quarterly: CC, CH, DO, ES, HU, LA, LI, LY, NY, PE, ST and WP														
*Claim payments in June 2016 are skewed due to early payments ahead of \$2 fee increase														



CMR-Division of Minerals - 2021-2025 Budgets and Forecasts (as of 7/29/2022)									
Revenue									
GL #	Description	FY21 Actuals	FY22 Budget	FY22 YTD	FY22 Forecast	FY23 Forecast	FY24 Forecast	FY25 Forecast	Remarks
2511	Balance Forward Previous Year	1,871,712	2,585,143	2,585,143	2,585,143	2,790,003	2,413,367	2,327,935	
3578	BLM Grant	202,473	200,000	200,000	200,000	200,000	200,000	200,000	BLM grant funding AML work. \$200k grant awarded 9/6/21, anticipate similar amount thru FY25
3580	USFS Assistance Agreement	28,039	10,772	80,349	80,349	80,000	80,000	80,000	USFS assistance funding AML work
3584	NPS Grant		94,092	77,787	77,787	0	0	0	National Park Service funding for AML work (unknown future funding)
3654	Oil Production Fee	20,508	37,907	22,668	22,668	25,000	25,000	25,000	\$0.15 per bbl fee for oil production annually (\$0.05 from 12/20 - 10/21)
3717	Oil Permit Fees	2,500	3,300	4,400	4,400	4,400	4,400	4,400	Permit fees for new oil and gas wells
3718 & 3727	Mining Claim Fees	2,411,550	2,114,150	2,576,740	2,644,530	2,644,530	2,538,749	2,437,199	Mining Claim fees @ \$10/claim filing, flat for FY23, -4% for FY24, -4% for FY25
3736	Geothermal Fees	143,850	160,800	156,550	156,550	156,550	156,550	156,550	Annual fee and permit fees for geothermal wells and permitting
3740	Dissolved Mineral Resource Fees	0	2,000	8,000	8,000	8,000	8,000	8,000	Permit fees for DMR (lithium brine) well permits
3770	Surface Disturbance Fee (AML)	102,180	81,740	90,940	90,940	80,000	80,000	80,000	\$20 per acre fee for new mine surface disturbance, FY23=12-year avg.
4011	Copy Machines - Sales to Public	15	27	0	0	0	0	0	Copying charge for Public Records Request
4027	Publication Sales (AML signs)	1,556	1,210	2,937	2,937	2,937	2,937	2,937	AML signs sold at office
4218	Credit Card Rebate		0	294	294	294	294	294	
4311	Medallion Royalty Fee	788	1,304	253	253	253	253	253	Fee for minting of medallions with State seal remitted to NDOM
4326	Treasurer's Interest	12,998	40,990	16,858	22,000	22,000	22,000	22,000	Interest we receive for money deposited with Treasurer
4620	Transfer from Recl. Bond Pool	63,695	80,793	58,057	58,057	60,000	60,000	60,000	Fee from Bond Pool for NDOM Management
4669	CARES Act Reimbursement	10,320			0	0	0	0	Federal funds used to offset pandemic related expenditures
	REVENUE TOTAL	\$4,872,185	\$5,414,228	\$5,880,976	\$5,953,907	\$6,073,967	\$5,591,550	\$5,404,568	
					3,368,765				
Expenditures									
CAT #	Description	FY21 Actuals	FY22 Budget	FY22 YTD	FY22 Forecast	FY23 Forecast	FY24 Forecast	FY25 Forecast	Remarks
01	Personnel (Sal.,WC, PERS,OT)	1,156,212	1,296,101	1,133,108	1,336,101	1,372,893	1,428,611	1,457,168	FY22/23 is as in Leg-Approved Budget plus \$40k (OT), 1% COLA (FY23), plus \$30k retirement payout ('23), FY24 +86k new GIS (9 mos.), FY25 +114k (GIS)
02	Out-of-State Travel (Staff, CMR)	0	23,365	16,381	23,365	25,000	33,642	38,357	FY23 as in budget, FY24/25 as proposed
03	In-State Travel (Non-AML)	2,084	12,049	11,408	12,049	12,900	15,425	15,425	Travel, lodging and per-diem within State, as in budgets
04	Carson Operating Expenses+Equipment	95,031	112,893	105,515	112,893	113,134	122,992	122,992	Rent, Operating supplies, as in budgets
05	Equipment	0	1,297	1,210	1,297	1,706	3,960	3,999	Desks, chairs, as in budget
08	CMR Travel (In-State)	422	7,128	1,712	2,200	7,128	7,128	7,128	As in Budget
09	Special Projects (Mackay, NBMG)	209,936	224,506	152,016	152,016	234,800	225,600	144,200	FY23 \$97.2k (NBMG-base contract), \$75.6k (FY23 NBMG-Lithium and RRV), \$27k (PDAC), \$5k (AME), \$15k (NvMA Ed), \$15k (McCaw); FY24-\$97.2k (NBMG base), \$38.2k (NBMG Mining District Files Scanning), \$43.2k (NBMG Soda Lake Geo), \$47k (PDAC/AME/NvMA Ed); FY25-\$97.2k (NBMG base), \$47k (PDAC/AME/NvMA Ed)
14	Las Vegas Operating Expenses	32,667	44,078	41,575	44,078	44,078	41,552	42,479	As in budgets
17	Fluid Minerals	7,583	15,561	12,884	11,981	11,983	18,955	18,955	Field expenses for OGG and DMRE, as submitted in State Budget
18	AML Support (per diem, trucks, fuel, AML supplies and travel, SOSA supplies)	146,764	195,179	127,738	195,179	197,017	216,719	216,719	Up to 8 summer interns and 4 winters FY23-25; includes one new truck each year
25	CARES Act Expenditures	10,320	0	0	0	0	0	0	
26 & 82	Computer and IT	43,754	40,701	34,352	40,701	35,871	45,113	24,132	Computer hardware/replacements; EITS services and support
30	Training	4,721	7,092	7,092	7,092	7,092	8,225	8,225	ESRI and other training
39	AML Enhancements(contracts, equip.)	481,463	1,072,290	1,134,260	1,134,260	1,125,000	1,005,000	955,000	\$800k/yr contracted AML closure and related work. Work not completed in '21 pushed into '22. \$50k/yr CL Cty revisits (thru 24), \$30k LV UTV (FY22), \$50k/yr geo analysis, \$75k/yr cultural surveys, \$10k/yr helicopter surveys, \$20k/yr billboards, \$120k digital media campaign (FY23)
42	Public Agency AML Securing					400,000	0	0	Any unspent funds from FY23 would be transferred to FY24
87 & 88 & 89	Cost Allocations (State, Purchasing, AG)	96,085	90,693	90,693	90,693	71,998	90,693	90,693	Purchasing assessment, AG cost allocation, State cost allocation
	EXPENDITURE TOTAL	\$2,287,042	\$3,142,933	\$2,869,944	\$3,163,905	\$3,660,600	\$3,263,615	\$3,145,472	
86	Reserve - Balance Forward to Next Year	\$2,585,143	\$2,271,295	\$3,011,031	\$2,790,003	\$2,413,367	\$2,327,935	\$2,259,096	
					\$1,218,536	\$583,067	\$696,127	\$686,360	Reserve Amount in excess of "50% of Expenditures" guidance

UNIVERSITY OF NEVADA, RENO
AND
GREAT BASIN COLLEGE

MINING COLLABORATION UPDATE

Nevada Division of Minerals
Commission on Mineral Resources
August 10, 2022
Annie Huhta, Director Mackay School



University of Nevada, Reno
A National Tier 1 University



COLLABORATION CONCEPT

TO BE WHERE MINING IS

Bringing mining education full-circle back to Elko

IMPROVE SERVICES AND ADD VALUE

With a foundation of collaboration integrated services will target industry value addition

PRIORITIZE TALENT GROWTH

From dual-credit high school certificates, to reskilling, and professional development – talent growth is the primary goal



University of Nevada, Reno
A National Tier 1 University

MACKAY
School of Earth Sciences & Engineering
College of Science | www.unr.edu/mackay





University of Nevada, Reno
A National Tier 1 University

MACKAY
School of Earth Sciences & Engineering
College of Science | www.unr.edu/mackay



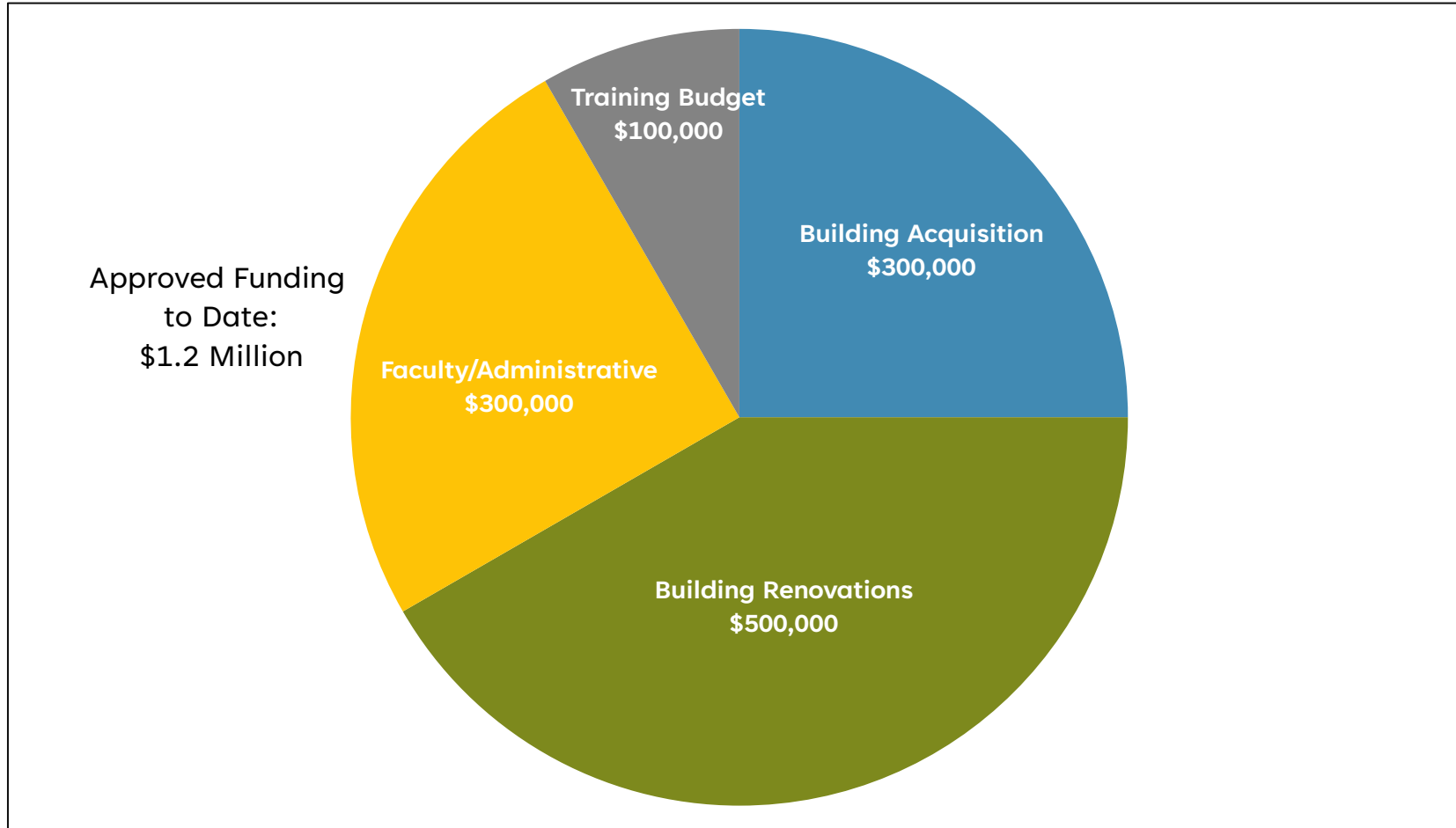


Building Space:

- 3-4 Classroom Spaces
- 3-4 Office Spaces
- Ample Parking
- Large Lab Space
- Secure Footprint
- Easy Access



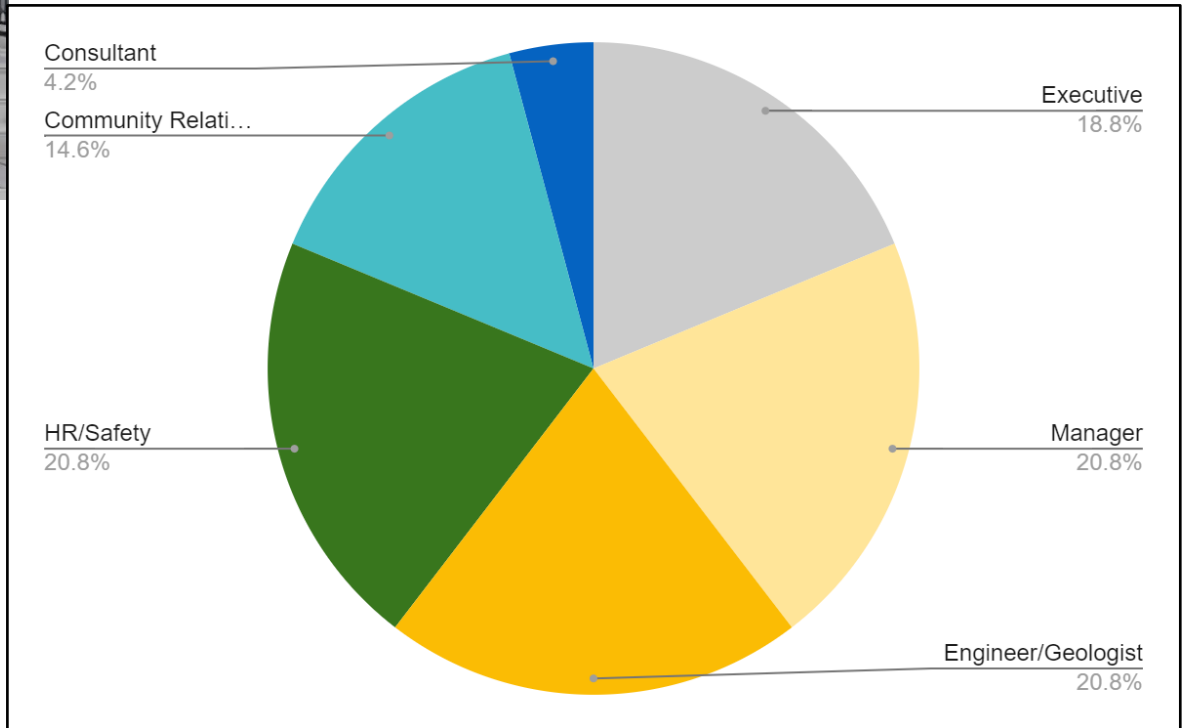
INITIAL FUNDING ALLOCATIONS





INDUSTRY SUMMIT ATTENDANCE ELKO, NV APRIL 2022

The Excellence in Mining Team, along with GBC President Helens and UNR Provost Thompson welcomed 48 industry partners to an MCE working session in Elko in the beginning of April to provide programmatic feedback and ideas.

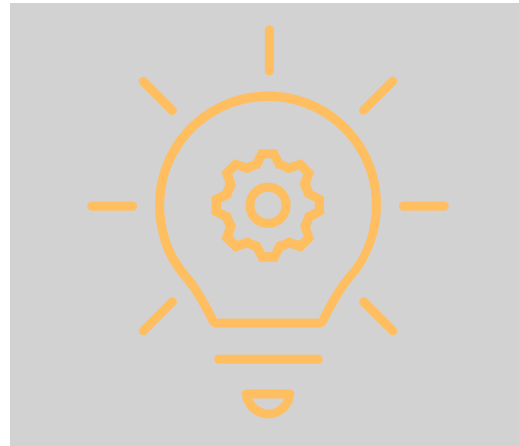


INDUSTRY SUMMIT *OUTCOMES: PHASE I* ELKO, NV APRIL 2022

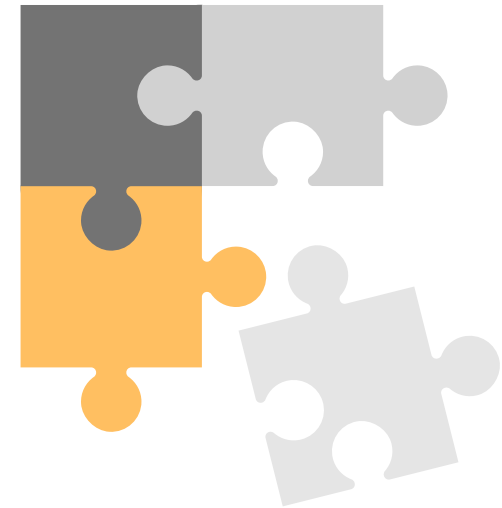
- Education



- Industry research



- Community outreach

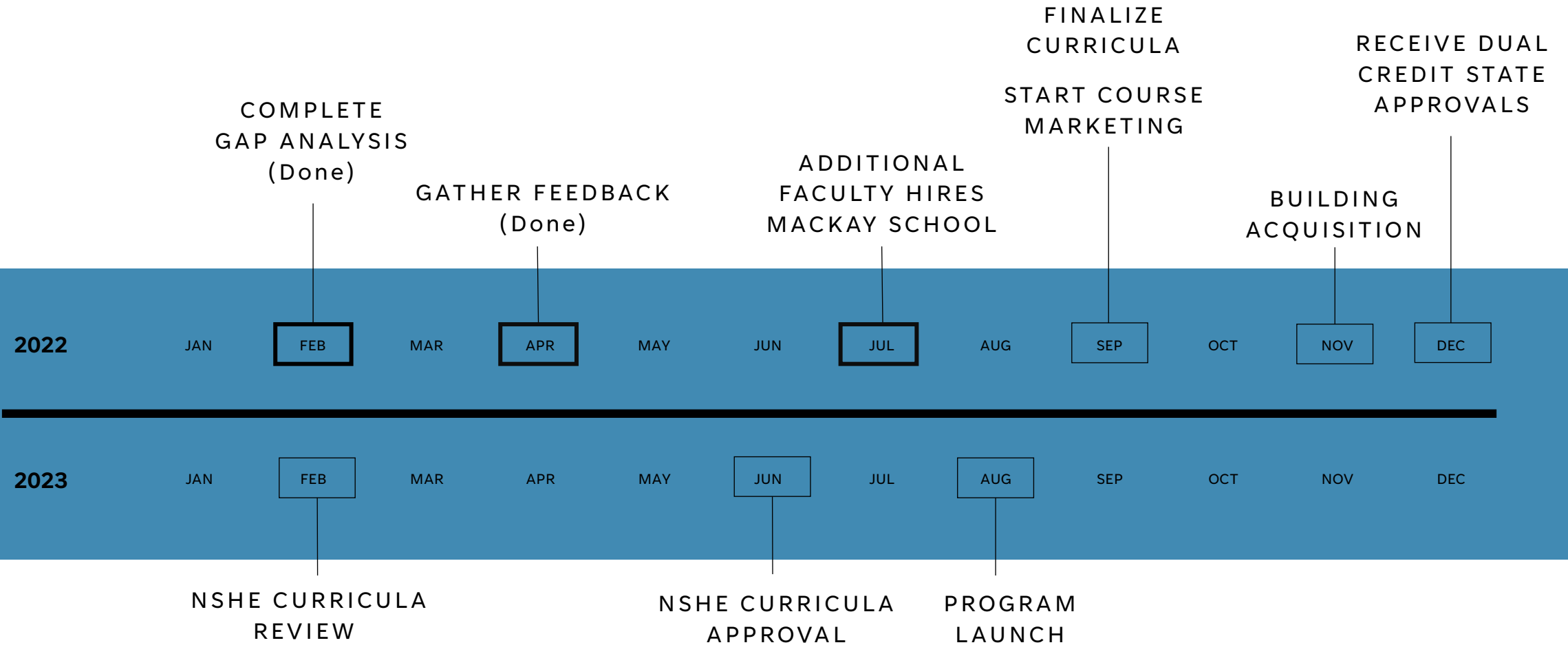


PHASE I COLLABORATION DELIVERABLES

- Expand the number of skill-cert and 1-year technical trade certifications offered within the collaboration.
- Expand current high school dual credit offerings, including the newly crafted technical trade certifications mentioned above.
- Ensure consistency in course offerings across all certificate and degree programs and across all locales.
- Include industry partners in all aspects of student education from curricula design to classroom visit and instruction to case study examples involving industry research opportunities.
- Integrate community engagements to promote opportunities within the mining industry and to connect educational pathways to successfully advance those opportunities.
- Create pathways for all technical trade certifications offered through the collaboration to connect to 4-year degree programs offered within the Mackay School.



TIMELINE FOR MINING CENTER OF EXCELLENCE CONCEPT GOALS AND OBJECTIVES



THANK YOU!



ANNIE HUHTA



775-782-8735



AHUHTA@UNR.EDU

NEVADAMINING.ORG/ISCORE



University of Nevada, Reno
A National Tier 1 University



Date: August 10, 2022

Project Title: Request Sponsorship to Purchase Laboratory Equipment in Support of the Educational and Community Outreach Goals for the Nevada Mining Center of Excellence

Organization: Mackay School of Earth Sciences and Engineering, University of Nevada, Reno (UNR) in collaboration with Great Basin College

Summary: The Mackay School of Earth Sciences and Engineering is working in partnership with Great Basin College to establish a proposed “Nevada Mining Center for Excellence” (MCE) in Elko, Nevada. The MCE seeks to further collaborative engagement, innovation, research activities, and educational activities for the future of mining and associated industries in Nevada. The laboratory equipment requested will provide hands-on educational and training opportunities for high school and college students, and current mining professionals, alike. Laboratory equipment will also be used to engage community outreach focused on fun, educational ‘STEM’ interactions.

Initial educational programming will launch in the fall of 2023 providing dual credit coursework for juniors and seniors in rural Nevada high schools. These dual credit courses will introduce mineral resource, geology, mining and metallurgy, health and safety, economic, and sustainable mining concepts. Upon graduating from high school students will be able to transfer earned credits to continue their education at either the Mackay School or Great Basin College.

Project Lead: Annie Huhta Director, Mackay School of Earth Sciences and Engineering, UNR

Requested CMR Sponsorship: \$146,000

Laboratory Equipment Needs:

Unconfined Compression Testing Machine - \$65,000

The machine can test the compressive and tensile strength of diamond drill core which can be used to quantify the behavior of each rock strata allowing for the use of rockmass classification systems to estimate the effective rockmass strength.

Crushing & Grinding Lab Equipment - \$50,000

To demonstrate how metals can be liberated the ore must first be comminuted down to micron sizes. This crusher and mill is appropriate for lab scale rock samples (~2-3 inches) samples (25-50 lbs).

3D Topographical and Digital Sand Table - \$31,000

3D sand tables are useful design tools for learning about surface mine engineering techniques and are great for school children of all ages to demonstrate how topography changes are important as they change infrastructure requirements.



University of Nevada, Reno
A National Tier 1 University

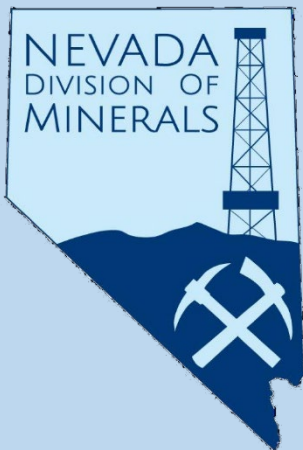


III. B Overview of the Nevada Mining Center of Excellence and Request for Support

Prospectors and Developers Association of Canada Annual Conference

Commission on Mineral
Resources Meeting

10 August 2022



Garrett Wake
Nevada Division of Minerals
702-486-4344
gwake@minerals.nv.gov
minerals.nv.gov



Overview

1. PDAC: What, When, Where
2. NDOM Role in Participating (the “Why”)
3. Performance Metrics
4. Collaboration
5. Budget / Actual Expenditures



PDAC: What, When, Where

From PDAC website: “The World’s Premier Mineral Exploration & Mining Convention is the leading convention for people, governments, companies and organizations connected to mineral exploration.”

- Annual convention is held in Toronto, Canada
- Typically takes place in March (June this year due to COVID restrictions & concerns)
- Three-day event: exhibitor hall, technical program, networking
- >17,000 attendees in 2022



NEVADA
Stake your claim

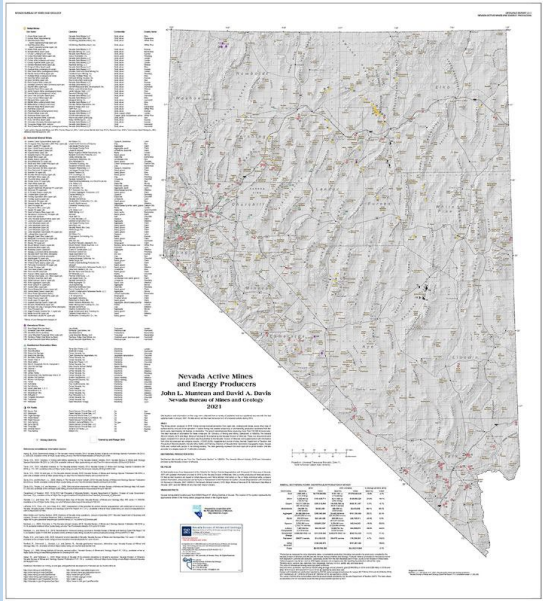
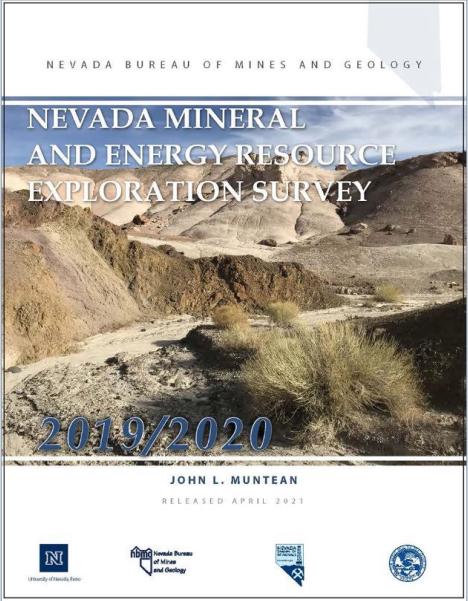
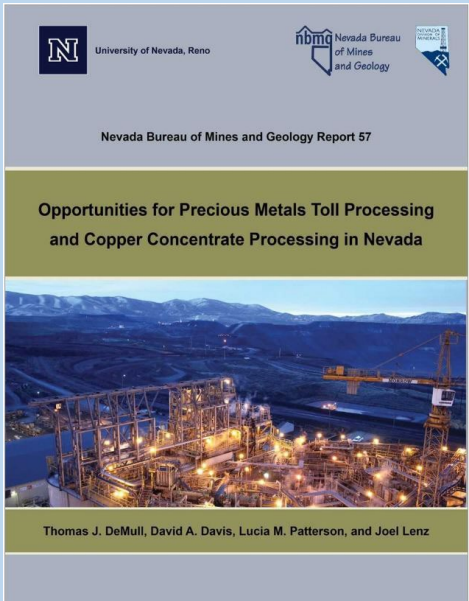
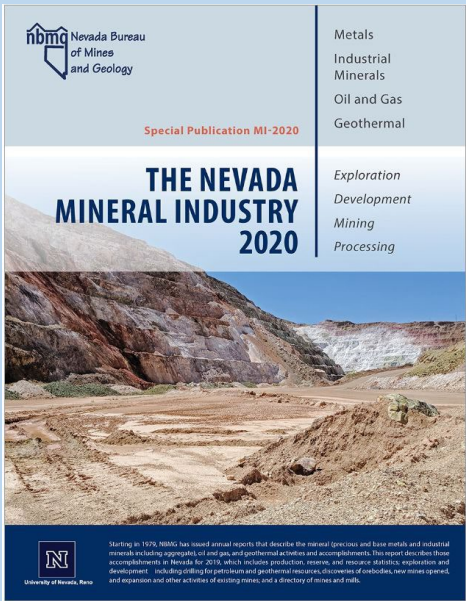
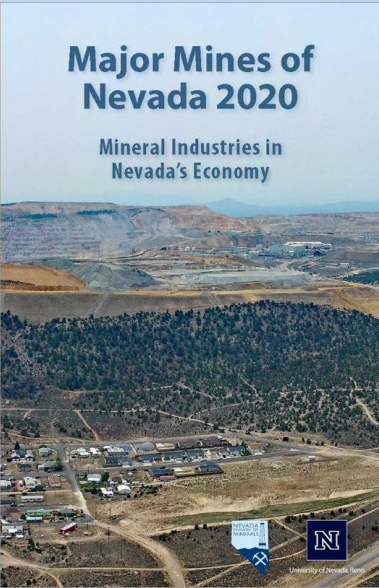
PDAC Members

Canada	5,141
USA	731
Latin America & Caribbean	595
Europe	378
Australia	236
Africa	195
Asia	187
TOTAL	7,463



The Division's Role in Participating (the "Why")

NRS 513.073(1): Encourage and assist in the exploration for and the production of oil, gas, geothermal energy and minerals within this State.



The Division's Role in Participating (the "Why") cont.

If you would like to search the BLM Land Records (MTP, Historical Index, etc.) you can either use the link provided in the pop-up for mining claim point listings and/or mining claims per section. If the township doesn't have any claims shown, click in the center of a section and follow the link.

NEVADA DIVISION OF MINERALS
Commission on Mineral Resources

Lithium Exploration and Mining in Nevada

PDAC 2022

Created by:
Mike Visser, Administrator

Presented by:
Garrett Wake, So. NV Programs Mgr.

Nevada Division of Minerals Open Data Site

Watch on YouTube: **Critical Minerals GSN 04/24/2024 Edits**

ALL THAT GLITTERS IS NOT (JUST) GOLD – CRITICAL MINERALS IN NEVADA

LUCIA M. PATTERSON
 NEVADA DIVISION OF MINERALS
 APRIL 2022

Watch on YouTube: **The Rock Cycle**

BY LUCIA M. PATTERSON
 NEVADA DIVISION OF MINERALS
 EDITED BY: LUCIA, AUGIE & DELILAH

Watch on YouTube: **Igneous Rocks Video**

IGNEOUS ROCKS

This video review the critical minerals as define in the May 18, 2018 federal register that occur in Nevada. This presentation will review the definition of a critical minerals, the 2018 federal register list and occurrences/deposits in Nevada's historic mining districts, aspects of quantifying/qualifying foreign reliance, a review of critical minerals at the local and global scale, activity for critical minerals in Nevada, and some data resources.

The rock cycle with Delilah was originally made at the request of an awesome 2nd grade teacher. The video reviews rock types and the rock cycle. It also show some examples of the rocks discussed. This video is intended for 1st grade and up, though Pre-K students may pick up on some things as well!

In this video we discuss igneous rocks. This video is probably best suited for 3rd-4th grade students and beyond. The video ends with an edible geology activity - Felsic Fudge.

Performance Metrics

- Conducted six presentations at the Nevada booth
 - Four by NDOM staff, one by Fortitude Gold, one by Mercury Exploration Nevada, Inc.
 - We open the presentation up to any Nevada organization
 - NDOM presentations had approximately 20 total attendees
 - Lithium overview, critical minerals overview, web-applications for mineral explorers, Nevada mineral production and activity
- One media interview
- Disseminated >250 reports, maps and brochures
- Interacted with >150 individuals with questions on Nevada mining
 - Referred >20 people to partner organizations
 - “How do we become a supplier in Nevada?” – NvMA, NNRDA
 - “Are there incentives for DLE pilot projects in NV” – GoED
 - “Where can I find a list of QPs available for consulting” – GSN

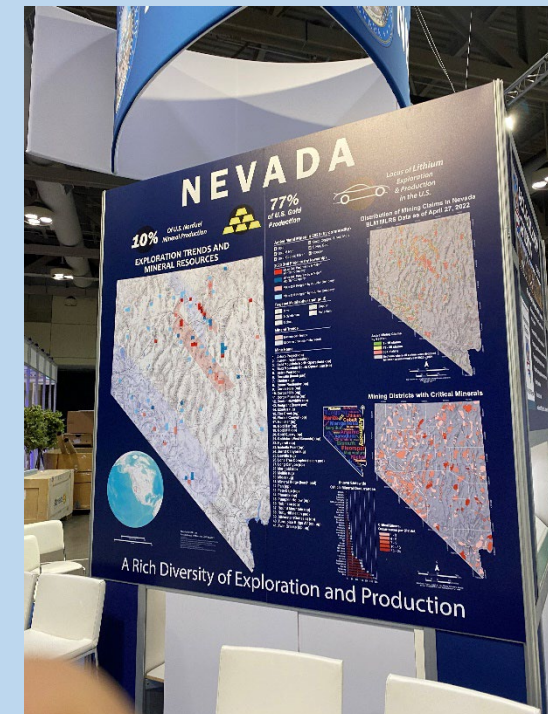
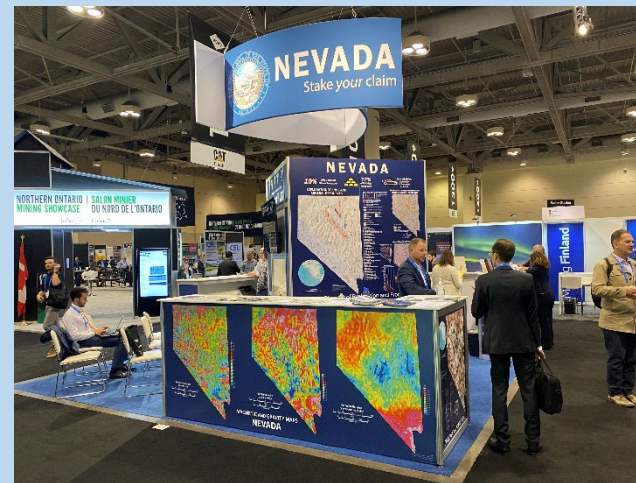


NEVADA Booth 931	
Presentation Schedule	
Monday, June 13th	
1:00 - 1:15 PM	Lithium Exploration and Mining in NV Garrett Wake, Nevada Division of Minerals Summary: A brief overview of current lithium and exploration mining operations and trends in Nevada, as well as recent legislation for prospective dissolved mineral explorers.
1:20 - 1:35 PM	Hannapah Property: Resurgence of a 1900s Silver - Gold Camp Al Turner, Fortitude Gold and Lyndsay Blundell, Mercury Exploration Nevada Inc. Summary: Overview of the Hannapah property located 28 kilometres east of Tonopah in Nye County.
Tuesday, June 14th	
11:00 - 11:15 AM	Critical Minerals in NV and Beyond Rob Ghiglieri, Nevada Division of Minerals Summary: A brief overview of critical mineral occurrences, past and current production in Nevada, and a deeper look into each critical mineral including where they are produced and U.S. net import reliance.
11:20 - 11:35 AM	Web-based GIS Applications for Nevada Explorers Garrett Wake, Nevada Division of Minerals Summary: A brief overview of some of the powerful, free web-based GIS tools Nevada explorationists have access to.



Performance Metrics

- Fraser Institute Annual Survey, Table 1: Attractiveness Index
 - 2015 – #3 / 109
 - 2016 – #4 / 104
 - 2017 – #3 / 91
 - 2018 – #1 / 83 *first year exhibiting
 - 2019 – #3 / 76
 - 2020 – #1 / 77
 - 2021 – #3 / 84



Collaboration

- GSN and NMEC participated in person this year
- NvMA, NV State BLM, GoED, NBMG attended in past years
- All organizations participate in planning meetings leading up to the conference



Budget / Actual Expenses

Budgeted expenses

FY '22 Division approved exhibit budget (CAT 09+04).....	\$27,093	(1)
FY '22 Division approved travel budget (CAT 02).....	\$8,472	(2)

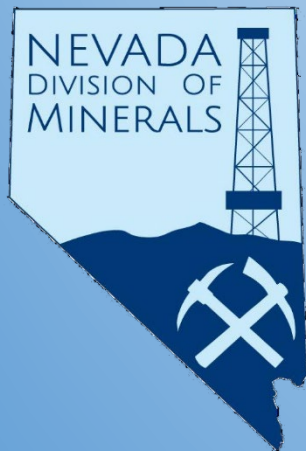
Actual expenses

Exhibit graphics printing, electronics and fabrication (09).....	\$18,441	
Exhibit space (09 + 04).....	\$7,176	
Shipping costs (09).....	\$367	
Exhibit miscellaneous (internet, insurance, cleaning) (09).....	\$766	
<u>CAT 09 + 04 TOTAL</u>	\$26,753	(1)
Travel expenses (two employees) (02).....	\$3,814	
<u>CAT 02 TOTAL</u>	\$3,814	(2)

*Some figures calculated by CAD to USD exchange rate and are preliminary

Reno Discovery Museum Rock and Mineral Exhibit Completion

Commission on Mineral
Resources Meeting
10 August 2022



Garrett Wake
Nevada Division of Minerals
702-486-4344
gwake@minerals.nv.gov
minerals.nv.gov



Overview

1. Design Recap
2. Budget
3. Timeline
4. Documentation of Exhibit Fabrication
5. Final Product

1. Design Recap

Minerals-side of exhibit

Mineral samples (most are mined in NV); minerals light up when flip-board is interacted with

Nevada counties – Light up when flip-board is interacted with

Mineral identification tools and properties; Moh's Scale of Hardness



Interactive (touch screen) mining tour (NvMA)

Ammonite fossil and graphic discussing mineralization of organic remains

Flip-board graphic showing common minerals used in things around a home

1. Design Recap cont.

Rocks-side of exhibit

Rock-forming environments graphic; lights up when interacted with (NBMG)

Rock samples with information on identification, formation, and use in society; interactive buttons light up graphic above



Generalized geologic map of Nevada (NBMG)

Rock-cycle graphic

Rock identification game

Electronic microscope and display monitor

2. Reno Discovery Exhibit Cost Breakdown

CMR-approved budget \$49,499

Total (actual cost), paid out in three phases \$49,499

Breakdown

- Phase I – Review and modify design of exhibit \$10,000
- Phase II – Fabrication, delivery and installation \$37,500
- Phase III – Technical Manual \$1,999
- Interactive Mine Tour software (NvMA) no cost, donation
- Rock and mineral samples provided by NDOM & partners

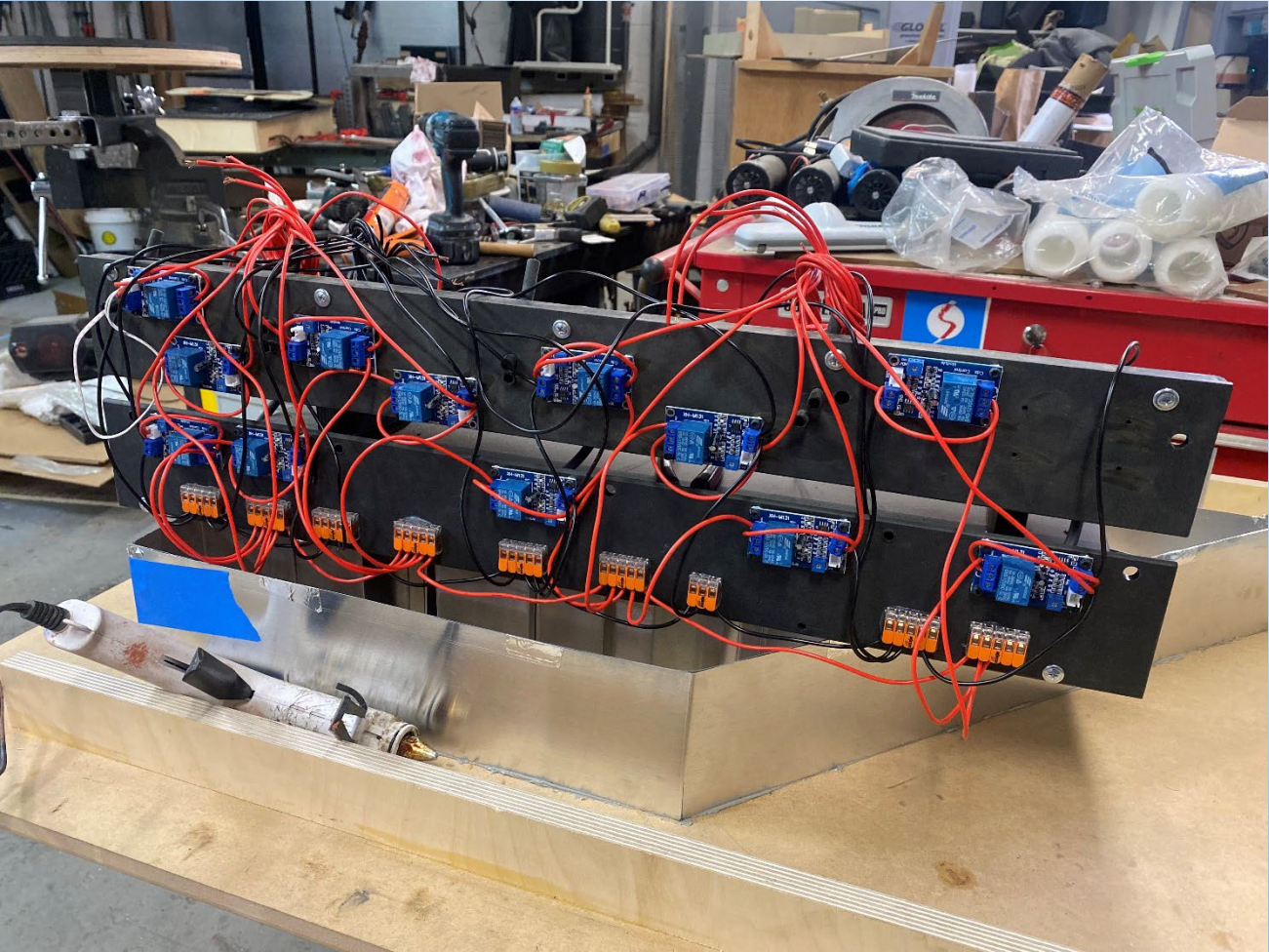
3. Timeline

- July, 2021: Funding for exhibit approved by CMR
- Nov, 2021: Work program completed by NDOM
- Dec, 2021: Work program approved by IFC, signed by BoE
- Feb, 2022: NDOM DAG approved contractor's Rejection of Industrial Insurance waiver, work on exhibit commenced
- April, 2022: Contract adjusted to end on June 30, 2022.
- June 25, 2022: Exhibit delivered and installed
- June 26, 2022: Contractor made minor corrections at NDOM request, exhibit signed-off by NDOM, technical manual received
- June 27, 2022: NDOM initiated payment, contract closed out

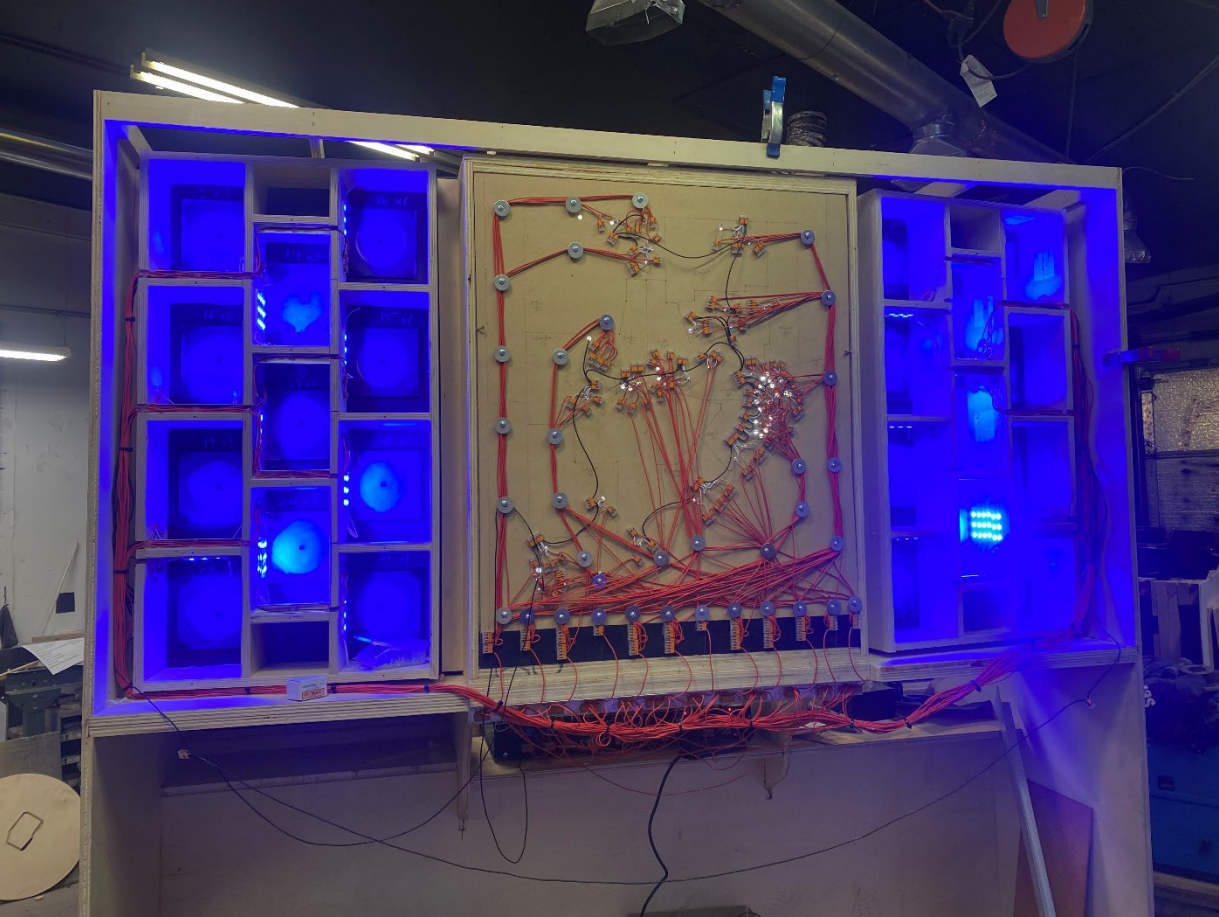
4. Documentation of Exhibit Fabrication



4. Documentation of Exhibit Fabrication cont.



4. Documentation of Exhibit Fabrication cont.



5. Final Products



5. Final Products cont.



5. Final Products cont.

Technical Manual

Minerals Owners Manual V.1



Nevada Division of Minerals. (Reno)

Built by 3saurus LLC
Billy Beddow
Owner
3saurus@gmail.com
805-208-5046

Touchscreen

1) Removing touchscreen from Component.

- Disconnect all plastic wire protectors and wires.
- **Two persons recommended for the next step
- Remove for screws from back of monitor and set aside.



- Pull wires through Component
- Remove two black Allen bolts and set aside.



- No need to remove the graphic to access sensors.
- All sensors and wiring are accessible from the back of the component.
- Each sensor/flip board will light up corresponding Counties and mineral samples (Blue LEDs)

3) Ammonite Fossil



1) Twelve red push button Plate with Minerals enclosed in hemispheres.



**All LED lighting and wiring are accessible from back of component.

Removing Plates

- Each plate is mounted with four screws.
- Each Mineral is mounted to black Skatelite then glued to the back of the plate.



1) Removing turntable from Component.

- Disconnect all plastic wire protectors and wires.
- Pull wires through Component and Stainless steel post.
- **Two persons recommended for the next two steps
- 1. Remove single black Allen bolt underneath telescoping square tubing (Telespar)

Placeholder for video of exhibit

Funded by the
Nevada Commission on Mineral Resources

Design and Fabrication by
3saurus LLC
Nevada Division of Minerals

Special Thanks

Nevada Mining Association
Nevada Bureau of Mines and
Geology

MP Materials (Mountain Pass Mine)
Bill Durbin
Kathryn Beddow

NEVADA PUBLIC AGENCIES ABANDONED MINE LAND PHYSICAL SAFETY HAZARDS CLOSURE FUNDING
REQUEST GUIDELINES
NPA AML Closure Request Form

Overview

The purpose of this program is to allow public agencies within the state of Nevada to apply for funding from the Division of Minerals (the Division) to close dangerous abandoned mines lands (AML) hazards on land they own or control.

The Division has limited manpower to prepare and manage additional closure projects throughout the state; however, public agencies that have the capability to prepare, manage and successfully complete AML hard-closure projects may apply for funding from the Division.

Requests will be assessed and approved based on a variety of factors, including: the ability to plan, investigate and prepare a scope of work for projects; manage projects; provide funding and/or in-kind resources towards projects; project proximity to population centers, highways, and recreation areas; relative danger of project hazards; and project timeline.

Project funding is contingent upon Division approval, completed interlocal agreement, Nevada Board of Examiners approval and completed project or phase review and sign-off by Division staff. The Division may allow for phased payments if defined in scope of work. Payments are made only after completion of phases or projects.

Required Documents

- **Cover letter** on public agency letterhead briefly summarizing project goals, anticipated direct and indirect funding from submitting entity, available in-kind resources and anticipated project timeline;
- **NPA AML Closure Request form;**
- **Project scope of work**, including maps, documentation of aerial imagery survey (Google Earth or other), Hazard Status and Mine Closure Report Form with photographs and GPS coordinates of each abandoned mine (data must have been collected within the past five years), anticipated timeline, anticipated direct and indirect funding sources, in-kind resources available for project, Nevada Department of Wildlife closure recommendations (if required), and other pertinent information;
- **Project estimates**, which may be obtained through the submitting entity's established contracts, the State of Nevada's AML contractor, submitting entity's internal processes, or through other contracting means which abide by applicable Nevada law.

Request Workflow

Review the NPA AML Closure Request Workflow form. Additional information on each step is provided below.

1. Identify parcels owned or controlled by jurisdiction that contain dangerous abandoned mines.

This program is meant to provide funding to close dangerous abandoned mines on privately owned land controlled by the submitting public agency. It is recommended that the submitting entity generate a spatially-referenced polygon file (shapefile, KML, KMZ, etc.) containing only parcels of land that the entity owns or controls. The Division is able to quickly assess whether there are known abandoned mine hazards within spatially-referenced polygon files; therefore, it is recommended that the submitting entity include all jurisdiction-controlled lands for review as there may be additional hazards known to the Division. Send this information to the Division in step 3 of this process.

2. Generate list of APNs with PLSS land legal descriptions.

Generate a table containing all Assessor Parcel Numbers (APNs) and the Township, Range and Sections within which the lands are located. Send this information to the Division in step 3 of this process.

3. Contact the Division for known AML hazard data within the project area.

Contact Sean Derby (sderby@minerals.nv.gov) and CC Garrett Wake (gwake@minerals.nv.gov) with your intent to begin the request process. Include as an attachment the spatially-referenced polygon file (step 1) and the table of parcels (step 2). You may also contact the Division if you have questions or need assistance with this process.

4. The Division will review the submitted data and respond with spatially-referenced point data of abandoned mine hazards within the project boundaries.

- a. Review and confirm that the AML hazards provided by the Division are located within public agency-owned or controlled lands.
- b. Conduct aerial reconnaissance of the project area using Google Earth or other means to identify other potential uncatalogued dangerous abandoned mines within the project area. Reference AML data sent by the Division to not duplicate efforts. The Division's AML dataset is the best available information; however, previously unidentified hazards are cataloged regularly.

5. Conduct field surveys to verify coordinates and status of known hazards and investigate other potential hazards

Review the site-specific abandoned-mine-hazard data sent by the Division in step 4. Conduct in-person field visits of each documented hazard and any potential uncatalogued hazards identified by aerial reconnaissance. Visits must be documented by photograph and updated GPS coordinates must be collected for each site. This information is required for the Division to consider a funding request.

6. Prepare a scope of work and submit collected data to the Division.

- a. Complete a Hazard Status and Mine Closure Report Form, to document known and newly discovered abandoned mine hazards assessed during step 5. Send this form with photographs of each hazard to sderby@minerals.nv.gov and CC gwake@minerals.nv.gov.
 - b. Prepare a project scope of work which details the anticipated funding for the project from all sources, including direct, indirect (grants, etc.), and in-kind sources; a timeline for all major milestones; anticipated contractor(s); and any other important aspects of the project.
7. Obtain one or more cost estimates

Contracting must adhere to applicable Nevada laws and the State of Nevada's, State Administrative Manual (SAM). If the applying public agency has the means to complete work internally an outside contractor may not be necessary. The State of Nevada has an established contract for AML-closure work which may be used to provide estimates and conduct closure work through a joinder.

8. Obtain funding for project work
- a. Continue to identify and obtain direct and indirect funding for the project. At this step, confirmation of funding from non-Division sources should be sought or funds should be obtained.
 - b. Continue to identify and obtain means of in-kind support. At this step, confirmation of use or availability of materials and resources should be sought or obtained.
9. Complete the *Nevada Public Agencies Abandoned Mine Land Physical Safety Hazards Closure Funding Request* form.
10. Prepare the request submission package and email to the Division by emailing sderby@minerals.nv.gov and CC gwake@minerals.nv.gov. A completed package must include the following information:
- a. Cover letter on organization letterhead
 - b. Nevada Public Agencies Abandoned Mine Land Physical Safety Hazards Closure Funding Request form
 - c. Project scope of work
 - d. Any supplementary documentation which may assist the Division in determining need

Please send the package as a *.zip file. If the submission is too large to email, you may mail a flash drive or CD, or email a cloud-storage link to the Division.



STATE OF NEVADA
 COMMISSION ON MINERAL RESOURCES
DIVISION OF MINERALS
 400 W. King Street, Suite 106
 Carson City, Nevada 89703
 (775) 684-7040 | Fax (775) 684-7052
<http://minerals.nv.gov>

Date Received:

**NEVADA PUBLIC AGENCY ABANDONED MINE LAND PHYSICAL SAFETY
 HAZARDS CLOSURE FUNDING REQUEST**

Date: _____ Submitting Public Agency: **County / City / Tribal / Other:** _____

Name: _____ Organization: _____

Title: _____ E-mail: _____

Office Phone: _____ Cell Phone: _____

Township(s), Range(s) and Section(s) encompassing the project area:

T_____ R_____ Sec(s)_____ T_____ R_____ Sec(s)_____

T_____ R_____ Sec(s)_____ T_____ R_____ Sec(s)_____

Assessor's Parcel Numbers included in project: (include an attachment if more lines are needed)

Number of verified abandoned mine openings included in proposal: _____

Have you obtained one or more estimates for this project? **Yes / No** If yes, please attach to proposal

Do you anticipate contributing project funding? **Yes / No** What is the est. dollar amount? _____

Do you anticipate contributing in-kind project support? **Yes / No** If yes, please briefly describe below:

What is the dollar amount being requested from the Division? _____

**PUBLIC AGENCY AML CLOSURE PROGRAM
HAZARD STATUS AND MINE CLOSURE REPORT**

PUBLIC AGENCY: Lyon County
PROJECT NAME: Como **HAZARD ID:** LY-0351 **COUNTY:** Lyon **HAZARD TYPE:** SHAFT
USGS 7.5' TOPO QUAD: Como **UTMs NAD83 z.11** 284075 E 4338680 N **HAZARD RANKING:** 8-High
APN: 123-45-678 **TOWNSHIP:** 15N **RANGE:** 22E **SECTION:** 15 **OWNER:** Lyon County Treasurer
DATE COMPLETED: 4/17/2023 **CLOSURE METHOD:** BCC W/Removable Bar **WORK PERFORMED BY:** EPS

COMMENTS:

BEFORE



AFTER



NEVADA PUBLIC AGENCY ABANDONED MINE LAND PHYSICAL SAFETY HAZARDS CLOSURE FUNDING REQUEST

Overview

The purpose of this program is to allow public agencies within the state of Nevada to apply for funding from the Division of Minerals to close dangerous abandoned mines on land they own or control. The Division has limited manpower to prepare and manage additional closure projects throughout the state; however, jurisdictions that have the capability to prepare, manage and successfully complete AML closure projects may apply for funding from the Division.

Requests will be assessed and approved based on a variety of factors, including ability to prepare and manage projects; proximity to population centers, highways, and recreation areas; relative danger of hazards; amount of funding provided by entity and project timeline.

Questions

- Do we want to consider requests from local and tribal jurisdictions? I know this is geared mostly towards patents that are owned by the counties due to tax liens. But, would these projects also meet our goals here or at least be open to consideration? **Yes. It isn't restricted to patents, simply public agency-owned lands.**
- What is a public agency? **Pursuant to: NRS 277.100 Definitions.** As used in [NRS 277.080](#) to [277.180](#), inclusive, unless the context otherwise requires:
 - 1. "Public agency" means:
 - (a) Any political subdivision of this State, including without limitation counties, incorporated cities and towns, including Carson City, unincorporated towns, school districts and other districts.
 - (b) Any agency of this State or of the United States.
 - (c) Any political subdivision of another state.
 - (d) Any Indian tribe, group of tribes, organized segment of a tribe, or any organization representing two or more such entities.
 - 2. "State" includes any of the United States and the District of Columbia.
 - (Added to NRS by [1965, 1332](#); A [1969, 327](#); [1973, 260](#); [1983, 128](#))
- Are nonprofits eligible to participate in the program? **I don't think so, but we probably should get concurrence from CMR.**
- Do we want/need to include wildlife in the process? **We should advise applicants that consultation with NDOW may be necessary depending on feature specifics and closure proposals.**

General notes

- Single page form for public agencies to submit for AML closure funding on land they own or control

- Proposal can ask for state funds, can include public agency funds and in-kind work
- Need to develop workflow and deliverables
 - Flow chart
 - Deliverables checklist
 - Submission guidelines and FAQs (to accompany flow chart)
 - Request form
- Contracting must meet State requirements (check on this)

Workflow

1. Identify abandoned mines on public agency-owned lands which are dangerous to the public and should be permanently closed.
2. Contact the Nevada Division of Minerals to establish a project area.
3. Visit, photograph and document coordinates for each hazard to verify location and need for closure.
 - a. Submit Hazard Status and Mine Closure Report Form for all project hazards.
4. Contact the Nevada Department of Wildlife to survey or recommend exclusion/gating, if applicable depending on the feature specifics and proposed closure.
5. Obtain an estimate through your entity's contracting process, established contracts, internal division, or through the State's AML contractor.
6. Identify other possible funding sources, including in-kind contributions.
 - a. Approval of funding will likely be predicated on the submitting entity's ability to plan, manage and complete the project with minimal assistance from the Division.
7. Complete the "Nevada Public Agency Abandoned Mine Lands Physical Safety Hazard Closure Funding Request" form on the Nevada Division of Minerals website. [NPA AML Funding Request]
8. Submit cover sheet, NPA AML Funding Request form, project scope of work, estimates and any other supplemental attachments to the Division.
9. If approved for funding, complete Interlocal contract specifying SOW, deliverables, expiration date, and NTE amounts. May allow for phased payments depending on project scope.
 - a. Funding contingent upon contract signed by all applicable parties and BOE approval. (Is IFC needed? **Not after the work program is approved authorizing expenditures in the new category.**)

NPA AML Funding Request Form Fields

- Submitting jurisdiction
- County
- APN and T/R/S(s) where work is to be completed
- Contact information
 - Name
 - Title
 - Email address
 - Phone number

- Estimated number of abandoned mine openings in project.
- Dollar amount requested from NDOM.
- Do you anticipate contributing funding towards this project? If so, what is the estimated amount?
- Do you anticipate contributing in-kind funding to this project? If so, please provide a brief description below.
 - Examples include: machinery (bulldozer, backhoe, etc.), equipment operators, project supervision and reporting, traffic control (if applicable), and other project-related resources.
- Have you received or prepared one or more quotes for completion of this project? Yes / No. If so, please attached quote(s) to your submission.

Required documents in request submission

- Cover letter defining the project scope, funding sources, timeline and a brief description of need and work to be done.
- NPA AML Funding Request form
- Scope of work containing
 - Map showing the project area and all AML sites included in the proposal
 - Hazard Status and Mine closure Report (if not submitted earlier)
 - Non-division funding sources and in-kind support
 - Estimated project timeline
 - Wildlife recommendations for each site (Excel format), if consulted
 - Anticipated contractor(s)
 - The State's AML contract is an option
- One or more project estimates

Required deliverables

- Photographs of closure work in progress
- Photos of final closures
- Invoice for remainder of incurred costs subject to NTE amount in Interlocal Contract.
- A report detailing the completed work, timeline, funding sources, and other pertinent information.